

Clinical Significance of ST Segment Depression in Lead aVR to Predict Culprit Artery in An Acute Inferior Wall Myocardial Infarction.

Madhu Gupta¹, Maheswar Prasad Kurmi², Bhoj Raj Sharma¹, Liping Chen¹, Ravi Shahi¹, Sun Jian¹

¹Department of Cardiovascular Diseases, Norman Bethune College of Medicine, The First Hospital of Jilin University, PR China.

²Department of Medicine, National Medical College, Nepal.

ABSTRACT

Background and Aims: *The main objective of this study is to analyze between left circumflex artery and right coronary artery as a presumptive predictor of a culprit artery in patients with an acute inferior wall ST elevation myocardial infarction according to ST segment change in lead aVR.*

Methods: *This study included 145 consecutive patients who presented with an inferior wall ST elevation myocardial infarction and underwent coronary angiography. Clinical and angiographic findings were compared between patients with and without aVR depression ≥ 0.1 mV.*

Results: *The sensitivity and specificity of ST segment depression in lead aVR to predict left circumflex artery as the culprit artery were 69% and 85%, respectively, and the positive predictive value and negative predictive value to predict left circumflex artery as the culprit arteries were 66% and 87%, respectively.*

Conclusion: *Our study supports, the presence of ST segment depression in lead aVR is associated with good specificity and negative predictive value and modest sensitivity and positive predictive value to determine left circumflex artery as an infarct related artery in an acute ST segment elevation inferior wall myocardial infarction.*

Citation

Madhu Gupta, Bhoj Raj Sharma, Liping Chen et al. *Clinical Significance of ST Segment Depression in Lead aVR to Predict Culprit Artery in An Acute Inferior Wall Myocardial Infarction. Nepalese Heart Journal* 2015; 12(1):5-9

Key words

Inferior wall MI, Lead aVR, ST Depression

INTRODUCTION

The inferior wall (I-AMI) and inferolateral wall of the left ventricle are supplied by the Right Coronary Artery (RCA) and Left circumflex LCx. An I-AMI is caused by an occlusion of either the RCA or LCx, and predicting the artery involved can be challenging because the dominance of the RCA and LCx can vary significantly among

Corresponding Author

Sun Jian

Department of Cardiovascular Diseases
Norman Bethune College of Medicine,
The First Hospital of Jilin University, Jinlin, PR China
Email: sunjian418@gmail.com

patients. Multiple ECG criteria have been studied to predict the culprit artery based on ST segment elevation and ST segment depression in different leads.¹⁻⁹ Many recent studies have been suggesting ST depression in lead aVR as a predictor of LCx artery occlusion.¹⁰⁻¹² The purpose of this study is to examine whether the culprit artery in case of the I-AMI can be predicted by lead aVR depression and also to study its sensitivity, specificity and predictive values.

METHODS

In order to study retrospectively, we collected 312 patients having an acute I-AMI, admitted in coronary care unit of first hospital of Norman Bethune college of Medicine from 1st January 2013 to 31st December 2013 and who subsequently underwent coronary angiography during hospitalization. Only 145 patients (male 105 and female 40) met our inclusion criteria, which included chest pain lasting for ≥ 30 minutes before hospital admission, an increased in serum creatinine kinase (CK-MB) greater than twice the upper limit, ECG abnormalities that included ST segment elevation >0.1 mV (1mm) in at least 2 or 3 inferior leads (II, III, aVF), ST segment depression of at least 0.1 mV, and coronary angiography showing total occlusion or critical stenosis $>70\%$ in a single vessel either LCx or RCA. Patients with previous history of an acute myocardial infarction, coronary artery bypass surgery or percutaneous coronary intervention prior to current hospitalization, evidence of recent left bundle branch block, and significant stenosis in both LCx and RCA or triple vessel disease were excluded. A 12 lead ECG was recorded in all patients. The ST segment deviation was measured manually to the nearest 0.5mm, 80ms after the J point by a single cardiologist who was unaware of all clinical and angiographic findings. ST segment depression in lead aVR of at least 0.1mv (1mm) was the most important criterion to distinguish between LCx and RCA as presumptive predictor of the culprit artery. Coronary angiography was performed during hospitalization in all patients. The results of this test were compared with those obtained from ECG to distinguish the real culprit artery. All patients underwent PCI following coronary angiography. Data were expressed

as the mean \pm SD for continuous variables and percentages for categorical variables. Statistical significance ($p < 0.05$) was assessed by the chi-square test or Fisher exact test for categorical variables and Mann-Whitney test for numerical variables. The sensitivity, specificity, positive predictive value and negative predictive value were evaluated in the two coronary arteries.

RESULTS

A total of 145 patients (male 105 and female 40) were included in the study, aged 30 to 76 years (mean age 58 ± 11). Overall, 44 patients (30%) were found to have aVR depression and 101 patients (70%) were without aVR depression. The culprit artery was found to be the right coronary artery in 103 patients (71%), the LC in 42 patients (29%). Baseline clinical characteristics were similar between the 2 groups (Table. 1). The LCx disease was found significantly

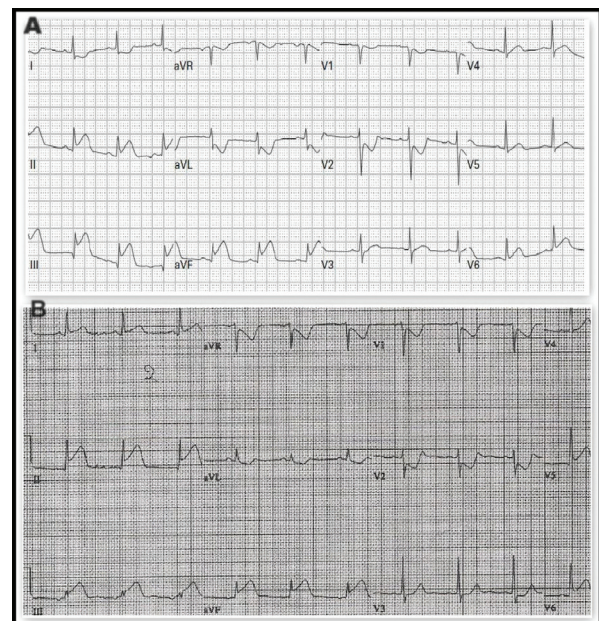


Figure 1. (A) A 65 years old male with ECG showing changes of acute inferior wall MI caused by occlusion of the RCA; ST segment depression in lead aVR <1 mm, the magnitude of ST segment elevation in lead III $>II$, ST depression in lead I; ST segment isoelectric in lead VI with depression in V2, strongly suggest acute RV. (B) A 59 years old man with ECG showing changes of acute inferior wall MI caused by occlusion of the left circumflex artery; ST segment depression in lead aVR >1 mm, ST elevation in lead II $>III$; ST segment elevation in lead I; ST depression in leads VI-V2 suggesting acute posterior injury.

Table 1 : General clinical characteristics

Variable	Patients with ST depression in aVR n = 44	Patients without ST depression in aVR n = 101	P value
Age	58±11	62±15	0.476
Male	32 (73)	73 (72)	0.956
Diabetes mellitus	18 (41)	21(21)	0.012
Smoking	18(41)	45(44)	0.684
Dyslipidemia	20(45)	72(71)	0.003
Hypertension	22(50)	48(48)	0.784
Culprit artery			0.0001
LCX	29(66)	13(13)	
RCA	15(34)	88(87)	
Killip class I	31(70)	81(80)	0.198
CK-MB (ng/ml)	227±73	136±67	0.367
LVEF (%)	57±90	59±70	0.51729
TIMI 0	17(39)	26(26)	0.118

higher proportion in ST depression in lead aVR (n=29; 66%) than without ST depression in lead aVR (n=13; 13%) (p=0.0001). The sensitivity and specificity of ST-segment depression in lead aVR for LCx as the culprit artery were 69% and 85% respectively. The positive predictive and negative predictive value for LC as the culprit arteries were 66% and 87%. However, 101 patients, with ST segment elevation or ST-segment isoelectric or ST segment depression <1mm in the lead aVR, classified as patients without depression in lead aVR were significant for RCA as the culprit artery in 88 (87%) compared to 15 (34%) (p=0.0001) patients. The sensitivity, specificity, positive predictive value and negative predictive value for RCA as the culprit artery were 85%, 69%, 87% and 66% respectively.

DISCUSSION

In an I-AMI, the prognosis of patients depends on identification of the occluded artery (RCA or LCx). Patients with occlusion in the RCA (approx. 80% of cases) is frequently associated with right ventricle involvement and have a poorer

Table 2 : The sensitivity and specificity of ECG criteria to predict culprit artery

Vessel	Sensitivity (%)	Specificity (%)	Positive predictive value (%)	Negative predictive value (%)
LCX	69	85	66	87
RCA	85	69	87	66

outcome^{1,13-14}. The identification of arteries and the size of infarct plays an important role in guiding the reperfusion therapy. The display of lead aVR (-150°) in an inverted format as lead -aVR (+30°) lies between lead I (0°) and lead II (60°). Thus, aVR depression means -aVR elevation, which represents the infarct of the apical and inferolateral walls, usually supplied by the posterolateral branch of either the RCA or LCx itself.¹⁰ The aVR depression suggests the involvement of LCx or a large RCA with a large posterolateral branch occlusion. This finding is consistent with the observation that 60% of both dominant RCA and dominant LCx infarctions had aVR depression.¹⁵

Several studies have considered the clinical importance of ST-segment depression in lead aVR in an I-AMI to identify the culprit artery. Tieralet al, in the HAAMU trial, a non-

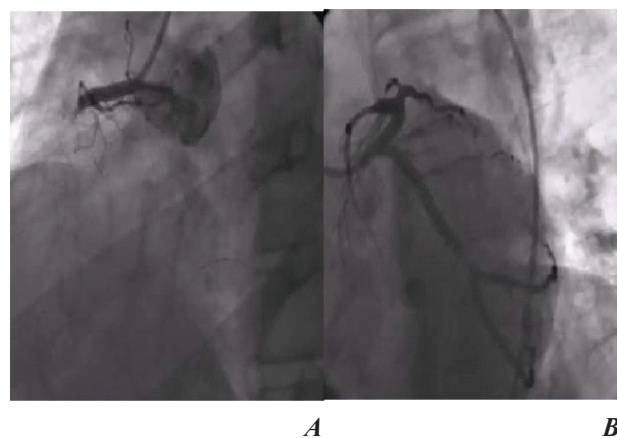


Figure 2.
A Coronary angiogram showed RCA occlusion.
B Coronary angiogram showed critical stenosis of LCx

randomized prospective study of an acute I-AMI, proposed a new algorithm and compared it with the prior algorithm from Fiol et al to predict the culprit artery. Among 98 patients included in their study, they found with ECG and angiography a positive and negative predictive value for the prediction of LCx or RCA as an IRA of 75% and 94%, 92% and 75% respectively. The sensitivity and specificity for the RCA, 96% and 56%, respectively, compared to that of Fiol et al with 96% and 38% respectively. Whereas, for the LCx, the sensitivity and specificity were 64% and 96%, respectively, compared to that of Fiol et al with 42% and 96%. They concluded that ST depression in lead aVR is better for predicting LCx as the culprit artery.⁸⁻⁹ Kanei et al, with the main aim to review all algorithms and compare them to ST depression in the lead aVR to predict the culprit artery in an I-AMI found the sensitivity and specificity of ST segment depression in lead aVR to predict the LCx as a culprit artery were 53% and 83% respectively. RCA as the culprit artery, the sensitivity and specificity were, 86% and 55%, respectively.¹⁶

Similarly, Sun et al, investigated the sensitivity and specificity of aVR in differentiating LCx from RCA as the culprit artery for an I-AMI. The sensitivity and specificity of LCx were 70% and 94%, respectively¹² and concluded that ST depression in lead aVR is associated with a higher specificity and a good sensitivity for LCx lesion, and all patients who are suspected of having an I-AMI should be carefully examined for aVR lead.

The aim of our study was to make the differential diagnosis, in 12 leads ECG, between LCx and RCA as a presumptive predictor of a culprit artery in patients with an I-AMI according to ST changes in lead aVR. ST depression in lead aVR is a simple, efficient method that does not require multiple complicated steps. ST segment depression in lead aVR was associated with LCx involvement with sensitivity, specificity,

positive, and negative predictive values of 69%, 85%, 66% and 87%, respectively. The sensitivity found in our study was higher, in comparison to the following studies; Kanei et al (53%), Tierala et al (64%), Fiol et al (42%). However, the specificity (85%) was less than the Tierala et al and Fiol et al but more than Kanei et al.

Conversely, 101 patients without ST depression in lead aVR were significantly associated with a culprit RCA, 88 (87%) compared to 15 (34%) and corresponding to the sensitivity, specificity, positive, and negative predictive value of 85%, 69%, 87% and 66%, respectively. From our results, the sensitivity obtained to predict RCA as a culprit artery was slightly lower than those found in Kanei et al (86%), Tierala et al (96%), Fiol et al (96%), whereas the specificity were higher than found in the above studies. Those differences in the sensitivity, specificity and predictive value in the previous and our studies, can be explained by the fact that there are some variations in the used criteria, sample size, delay in ECG recording and angiography.

The present study had several limitations that need to be considered when interpreting the clinical implications of our findings. This was a small sample size, retrospective study in a single center. The study lacked the follow-up and complications like reinfarction, post infarction angina, arrhythmias and mortality and the evaluation of right precordial leads (V4R) that have further helped to identify the culprit artery in an I-AMI.

CONCLUSION

Our study supports, the presence of ST segment depression in lead aVR is associated with good specificity and negative predictive value and modest sensitivity and positive predictive value to determine LCx as a culprit vessel in an I-AMI. Thus, the use of the ST segment in lead aVR remains a simple method with good result for predicting culprit artery.

REFERENCES

1. Kosuge M, Kimura K, Ishikawa T, et al. New electrocardiographic criteria for predicting the site of coronary artery occlusion in inferior wall acute myocardial infarction. *Am J Cardiol* 1998;82:1318-22.
2. Chia BL, Yip JW, Tan HC. Usefulness of ST elevation II/III ratio and ST deviation in lead I for identifying the culprit artery in inferior wall acute myocardial infarction. *Am J Cardiol* 2000;86:341-3.
3. Herz I, Assali AR, Adler T, et al. New electrocardiographic criteria for predicting either the right or left circumflex artery as the culprit coronary artery in inferior wall acute myocardial infarction. *Am J Cardiol* 1997;80:1343-5.
4. Zimetbaum PJ, Krishnan S, Gold A, et al. Usefulness of ST-segment elevation in lead III exceeding that of lead II for identifying the location of the totally occluded coronary artery in inferior wall myocardial infarction. *Am J Cardiol* 1998;81:918-9.
5. Bairey CN, Shah PK, Lew AS, et al. Electrocardiographic differentiation of occlusion of the circumflex versus the right coronary artery as a cause of inferior acute myocardial infarction. *Am J Cardiol* 1987;60:456-9.
6. Hasdai D, Birnbaum Y, Herz I, et al. ST segment depression in lateral limb leads in inferior wall acute myocardial infarction. *Eur Heart J* 1995;16:1549-53.
7. Assali AR, Herz I, Vaturi M, et al. Electrocardiographic criteria for predicting the culprit artery in inferior wall acute myocardial infarction. *Am J Cardiol* 1999;84:87-9.
8. Fiol M, Cygankiewicz I, Carrillo A, et al. Value of electrocardiographic algorithm based on “ups and downs” of ST in assessment of a culprit artery in evolving inferior wall acute myocardial infarction. *Am J Cardiol* 2004;94(6):709-14.
9. Tierala I, Nikus KC, Sclarovsky S, et al. Predicting the culprit artery in acute ST-elevation myocardial infarction and introducing a new algorithm to predict infarct-related artery in inferior ST-elevation myocardial infarction: correlation with coronary anatomy in the HAAMU Trial. *J Electrocardiol* 2009;42:120.
10. Menown IBA, Adgey AAJ. Improving the ECG classification of inferior and lateral myocardial infarction by inversion of lead aVR. *Heart* 2000; 83(6):657-60.
11. Nair B, Glancy L. ECG Discrimination between right and left circumflex coronary arterial occlusion in patients with acute inferior myocardial infarction. *Chest* 2002;122:134-39.
12. Sun TW, Wang LX, Zhang YZ, et al. The value of ECG leads aVR in the differential diagnosis of acute inferior wall myocardial infarction. *Intern Med* 2007; 46:795-9.
13. Berger PB, Ryan TJ. Inferior myocardial infarction: high risk subgroups. *Circulation* 1990;81:401-411.
14. Zehender M, Kasper W, Kauder E, et al. Right ventricular infarction as an independent predictor of prognosis after acute inferior infarction. *N Engl J Med* 1993;328:981-988.
15. Zhan ZQ, Wang W, Dang SY, et al. Electrocardiographic characteristics in angiographically documented occlusion of the dominant left circumflex artery with acute inferior myocardial infarction: limitations of ST elevation III/II ratio and ST deviation in lateral limb leads. *J Electrocardiol* 2009;42(5):432-9.
16. Yumiko Kanei, Jyoti Sharma, Ravi Diwan, et al. ST- segment depression in aVR as a predictor of culprit artery and infarct size in acute inferior wall ST-segment elevation myocardial infarction. *Journal of Electrocardiology* 2010;43: 132-135.