



Original Article

# A study to determine utility of platelet indices in differentiating hyperdestructive and hypoproductive thrombocytopenia

Shruthi N Shetageri<sup>1</sup>, Francis Roniya<sup>1</sup>, S R Raja Parthiban<sup>1</sup>

<sup>1</sup>Department of Pathology, MVJ Medical College & Research Hospital, Bengaluru, India

## Keywords:

Hyper-destructive thrombocytopenia; hypo-productive thrombocytopenia; MPV; Platelet indices; PDW; P-LCR;

## ABSTRACT

**Background:** Thrombocytopenia by definition signifies a platelet count below 1,50,000/mm<sup>3</sup> but this does not reflect the underlying pathology. Management of these patients significantly depends on identifying the primary cause of thrombocytopenia. With advances in automation, analyzers can now measure platelet parameters like mean platelet volume, Platelet distribution width, and Platelet large cell ratio which are potential biomarkers of platelet morphology. Presently, these non-invasive and cost-efficient diagnostic markers are quite underused. The study aimed to understand the relationship of instrument-derived platelet parameters with respect to the categorizing of thrombocytopenia based on underlying pathophysiology.

**Materials and methods:** A prospective study was conducted from September 2018 to October 2020 consisting of 315 cases of hyperdestructive thrombocytopenia and 54 cases of hypoproductive thrombocytopenia. After collecting the important clinical details, platelet count along with instrument-derived platelet indices was noted. A comparison of platelet indices was done between the two groups.

**Results:** In the hyper-destructive group, the mean platelet indices were found to be significantly higher in comparison to the hypo-productive group. No significant correlation was obtained between the platelet count severity and various platelet indices. Mean platelet volume had the highest sensitivity and specificity in differentiating hyper-destructive thrombocytopenia from the hypo-productive group.

**Conclusions:** Platelet indices aid in distinguishing hyper-destructive from hypo-productive causes of thrombocytopenia. Of the three indices analyzed, Mean platelet volume was shown to be a better parameter in differentiating the two groups.

## Correspondence:

Dr. Shetageri Shruthi Neelakanth  
Associate Professor, Department of Pathology  
MVJ Medical College & Research Hospital, Hoskote, Bengaluru, India  
ORCID ID: 0000-0002-6190-5255  
Email: dr.shruthi.n.s@gmail.com



Received : September 26, 2022; Accepted : March 19, 2023

**Citation:** Shetageri SN, Roniya F, Parthiban R. A Study to Determine Utility of Platelet Indices in Differentiating Hyperdestructive and Hypoproductive Thrombocytopenia. J Pathol Nep 2024;14(1):2123-9. DOI:10.3126/jpn.v14i1.48614

**Copyright:** This is an open-access article distributed under the terms of the Creative Commons Attribution 4.0 International License, which permits unrestricted use, distribution, and reproduction in any medium, provided the original author and source are credited.

DOI : 10.3126/jpn.v14i1.48614

## INTRODUCTION

Platelets are derived from the cytoplasmic fragments of megakaryocytes. They measure 3 -5  $\mu$ m in diameter and have a volume of 4.5–11 fl. Each megakaryocyte undergoes fragmentation to form approximately 1000 to 3000 platelets with a lifespan ranging from 7-10 days. Along with coagulation factors, they play a major role in hemostasis and in the prevention of bleeding. Platelets also contribute to a large extent in many inflammatory processes, microbial defense mechanisms, healing of wounds, angiogenesis, and remodeling. A platelet



count below  $150 \times 10^9/L$  in the peripheral blood is defined as thrombocytopenia.<sup>1</sup>

The pathomechanism that causes thrombocytopenia can be categorized as impaired platelet production, accelerated platelet destruction, and splenic pooling or sequestration. It is essential to evaluate the underlying cause of thrombocytopenia as it has an impact on the management of these patients.<sup>2</sup>

Bone marrow aspiration has continued to exist as the gold standard for diagnosing and evaluating the cause of thrombocytopenia. This invasive technique is time-consuming and poses the risk of bleeding especially in patients with severe thrombocytopenia. For a better assessment of these patients, innovative, non-invasive, and cost-efficient diagnostic techniques for the diagnosis of thrombocytopenia are required.<sup>3</sup>

Presently, automated hematology analyzers are being used mainly for complete blood counts and red cell indices but, additionally, these analyzers also provide many other parameters which can give much more information for clinical use. However, due to a lack of knowledge, they are not being utilized optimally to their best potential. Platelet indices (MPV, PDW, and P-LCR) are one such underutilized parameter that can help clinicians in screening and diagnosing the disease states. They give important information about the platelet activity and kinetics.<sup>2</sup> Understanding the changes in the platelet indices may help us better understand the probable cause of thrombocytopenia.<sup>4</sup>

Considering a need to identify a simple yet reliable test to categorize thrombocytopenia that could help in patient management, this study was done to understand the relationship of instrument-derived platelet parameters with respect to the underlying pathophysiology of thrombocytopenia.

## MATERIALS AND METHODS:

This study was conducted in the pathology department from September 2018 to October 2020 on thrombocytopenic patients being treated at MVJ Medical College & Research Hospital, a tertiary care center, situated in rural Bangalore. 369 cases of thrombocytopenia were studied during this period.

**Inclusion criteria:** All cases having platelet count less than  $1,50,000/mm^3$  were included in the study. Artefactual thrombocytopenia caused due to platelet clumping was

confirmed by peripheral smear examination.

**Exclusion criteria:** Cases where the hematology analyser did not display results of platelet indices were excluded from the study.

Blood samples were collected in EDTA tubes and processed using Sysmex KX 21 hematology analyzer. To prevent platelet swelling by the anticoagulant, the samples were analyzed within three hours of venipuncture. Platelet parameters that were recorded for all cases included platelet count, MPV, PDW, and PLC-R. The findings of additional tests done in the evaluation of thrombocytopenia, such as quantitative Buffy Coat (QBC), sepsis profile, dengue serology, and bone marrow examination along with other relevant clinical information were recorded from the hospital case files. Based on these details, thrombocytopenia cases were grouped into 2 categories: 1) Hyper-destructive thrombocytopenia 2) Hypo-productive thrombocytopenia

Data collected was entered into Microsoft Excel and was analyzed using SPSS 22 software. Qualitative data was represented in the form of frequencies and proportions. The chi-square test was used as a test of significance. Quantitative data was represented as mean and standard deviation. ANOVA (Analysis of Variance) and Paired t-test were used as the test of significance to identify the mean difference between the two study groups. The correlation between the platelet indices and platelet count was studied using the Pearson Correlation coefficient and ROC curve to obtain a reliable cut-off value of the indices.  $p$ -value  $< 0.05$  was considered as statistically significant.

## RESULTS:

The study included 369 cases of thrombocytopenia of which 315 cases belonged to hyperdestructive group and 54 cases to hypoproductive group. The majority of patients in hyperdestructive group, were in the age group of less than ten years 87 (27.6%) while 11 (20.4%) cases in hypoproductive group were in the age group of second, fourth, and fifth decades of life. (Table 1) A male predominance (58.4%) was observed in hyperdestructive group while a slight female preponderance (51.9%) was noted in hypoproductive group. Dengue accounted for the maximum number of hyperdestructive thrombocytopenic cases (48.6%) followed by sepsis (15.5%) (Fig 1) and immune thrombocytopenic purpura (8.3%) (Fig 2). Common causes for hypoproductive thrombocytopenia included megaloblastic anemia (70.4%) (Fig 3) followed by acute leukemia (18.5%). (Table 2).

Table 1: Age distribution among the cases in hyperdestructive and hypoproductive group

Age	Hyperdestructive		Group Hypoproductive	
	Count	%	Count	%
<10 years	87	27.6%	8	14.8%
11 to 20 years	52	16.5%	11	20.4%
21 to 30 years	60	19.0%	4	7.4%
31 to 40 years	31	9.8%	11	20.4%
41 to 50 years	37	11.7%	11	20.4%
51 to 60 years	24	7.6%	2	3.7%
61 to 70 years	15	4.8%	5	9.3%
71 to 80 years	9	2.9%	2	3.7%
<b>Total</b>	<b>315</b>	<b>100.0%</b>	<b>54</b>	<b>100.0%</b>

Table 2: Distribution of hyperdestructive and hypoproductive groups according to etiology

Clinical Diagnosis	HYPERDESTRUCTIVE		Total	
	Count	%	Count	%
Acute Gastroenteritis	11	3.5%	11	3.0%
Acute Pancreatitis	5	1.6%	5	1.4%
Birth Asphyxia	1	0.3%	1	0.3%
CKD	8	2.5%	8	2.2%
CLD	5	1.6%	5	1.4%
CVD	7	2.2%	7	1.9%
Dengue	153	48.6%	153	41.5%
Diabetes	7	2.2%	7	1.9%
Febrile Seizures	3	1.0%	3	0.8%
Filariasis	2	0.6%	2	0.5%
ITP	26	8.3%	26	7.0%
Malaria	5	1.6%	5	1.4%
Meningoencephalitis	10	3.2%	10	2.7%
Pregnancy Induced Hypertension	7	2.2%	7	1.9%
Scrub Typhus	2	0.6%	2	0.5%
Sepsis	50	15.9%	50	13.6%
Snake Bite	3	1.0%	3	0.8%
Viral Fever	10	3.2%	10	2.7%
	<b>315</b>	<b>100.0%</b>		
	HYPOPRODUCTIVE			
Acute Leukemia	10	18.5%	10	2.7%
Aplastic Anemia	4	7.4%	4	1.1%
Storage Disorders	2	3.7%	2	0.5%
Megaloblastic Anemia	38	70.4%	38	10.3%
<b>Total</b>	<b>54</b>	<b>100.0%</b>	<b>369</b>	<b>100.0%</b>

Most of the cases in the study had platelet count in the range of 51,000 to 1 lakh/cumm.(Table 3). There was a significant difference in the mean values of platelet count, MPV, PDW, and P-LCR between hyperdestructive and hypoproductive groups. (Table 4) However, no significant correlation between platelet count and platelet indices i.e. MPV, PDW, and P-LCR) was noted in hyperdestructive (p-value: 0.767, 0.350, and 0.957 respectively), and hypoproductive groups (p-value: 0.743, 0.300, and 0.763 respectively).

**Table 3: Distribution of Hyperdestructive and Hypoproductive groups according to range of platelet count**

Platelet count	Group						P value
	Hyper destructive		Hypoproductive		Total		
	No. of Cases	%	No. of Cases	%	No. of Cases	%	
<20000	31	9.8%	7	13.0%	38	10.3%	0.457
21000 to 50000	79	25.1%	18	33.3%	97	26.3%	
51000 to 100000	186	59.0%	26	48.1%	212	57.5%	
>1 lakh	19	6.0%	3	5.6%	22	6.0%	
<b>Total</b>	<b>315</b>	<b>100.0%</b>	<b>54</b>	<b>100.0%</b>	<b>369</b>	<b>100.0%</b>	

ROC Curve (Fig 4) was plotted to obtain the cut-off values for all the 3 indices (MPV, PDW & P-LCR) and calculate the sensitivity, specificity, Negative Predictive Value (NPV) and Positive Predictive Value (PPV) in differentiating Hyperdestructive and Hypoproductive thrombocytopenia cases. Sensitivity for mean platelets count, MPV, PDW, L-PCR was 66.67%, 88.57%, 85.40%, 42.54%

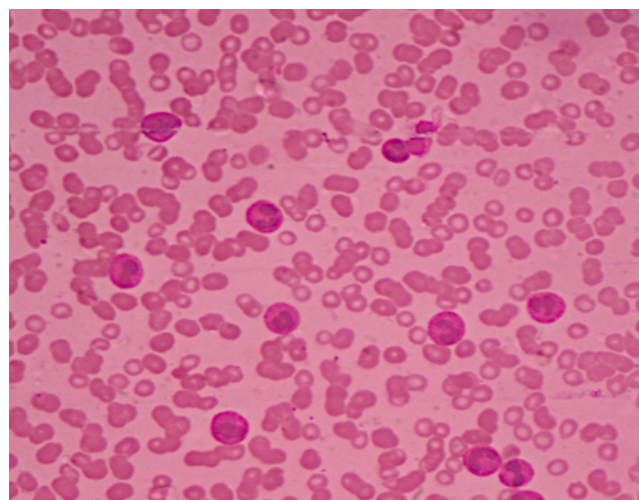
respectively, specificity was 52.38%, 70.37%, 48.15%, 83.33% respectively, NPV was 90.16%, 51.4%, 36.1%, 19.9% respectively and PPV was 19.35%, 94.6%, 90.6%, 93.7% respectively. On analysis, MPV was found to have the highest area under the curve and thus the highest sensitivity in differentiating the two groups. This was followed in decreasing order by P-LCR, PDW, and Platelet Count.

**Table 4: Comparison of Mean Platelet count, Mean MPV, Mean PDW & Mean P-LCR between Hyperdestructive and Hypoproductive groups**

Mean	SD	Platelet count				P value	
		Minimum	Median	Maximum			
Group	Hyper destructive	62034.92	27750.97	10000.00	63000.00	140000.00	<0.001
	Hypoproductive	53388.89	27829.95	11000.00	57500.00	130000.00	
<b>MPV</b>							
Group	Hyper destructive	10.71	1.21	7.00	10.70	16.40	<0.001
	Hypoproductive	9.03	1.16	7.10	9.00	11.90	
<b>PDW</b>							
Group	Hyper destructive	15.18	4.00	8.50	14.60	41.70	<0.001
	Hypoproductive	13.54	3.38	8.00	12.55	20.10	
<b>P-LCR</b>							
Group	Hyper destructive	31.39	7.23	8.10	31.10	52.00	<0.001
	Hypoproductive	27.02	6.81	14.20	28.20	39.80	

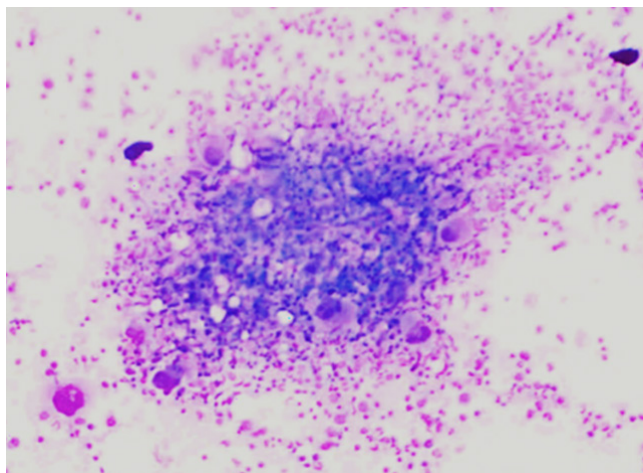
## DISCUSSION:

The study included 369 cases of thrombocytopenia. Based on the clinical diagnosis and the ancillary test reports, thrombocytopenia cases were categorized into hyperdestructive thrombocytopenia (315 cases, 85.4%) and hypoproductive thrombocytopenia (54 cases, 14.6%). Similar incidences have been noted by other authors in literature; Vidyadhar et al (81.4%), Gulati et al (79%), and Parveen et al (78.3%). [5,6,7] Of the 315 hyperdestructive cases studied, a majority of cases (72.7%) were due to dengue, ITP and sepsis. Vidyadhar et al also found a higher proportion of dengue and sepsis (47.3%) cases in their study.<sup>5</sup> However, the authors unlike our study did not encounter ITP cases as noted by us. Gulati et al also found dengue, ITP, and sepsis cases together accounting for 46.8% of total cases.<sup>6</sup> However, they had a lesser number of dengue cases in their study.

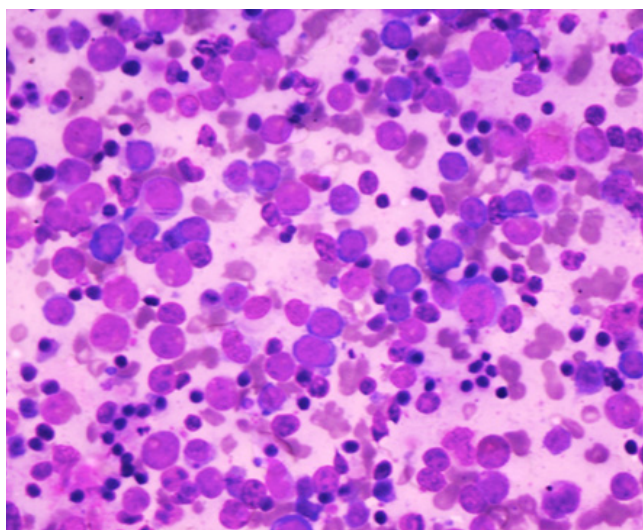


**Figure 1:** Case of sepsis with neutrophilic leukocytosis and thrombocytopenia (Leishman stain: 40X)

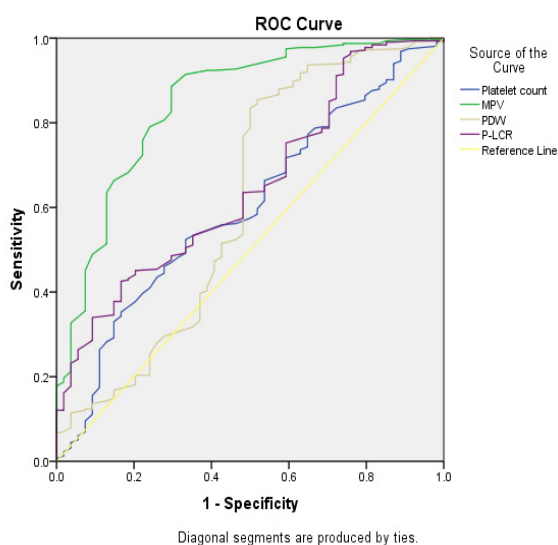




**Figure2:** Bone marrow showing increased megakaryocytes in ITP (Giemsa stain: 10X)



**Figure3:** Bone Marrow in Megaloblastic anemia showing erythroid hyperplasia and megaloblasts. (Giemsa stain: 40X)



**Figure 4:** ROC Curve showing validity of Platelet Indices in differentiating Hyper destructive and hypoproliferative thrombocytopenia

Hypoproliferative thrombocytopenia accounted for 54 of the total 369 cases (14.6 %). Of these, a majority of cases (70.37%) were due to megaloblastic anemia followed by acute leukemia (18.5%) and Aplastic anemia (7.4%). Similar observations have been documented by Vidyadhar et al where only these two conditions accounted for all the 13 cases of hypoproliferative thrombocytopenia.<sup>5</sup> Megaloblastic anemia generally presents with vague and nonspecific symptoms and remains unrecognized unless thoroughly evaluated. Gulati et al documented 52.4% cases of megaloblastic anemia cases which is lesser compared to our study.<sup>6</sup> This could be because they had a second group of dimorphic anemia in their study. They found a similar incidence of acute leukemias (14.28%) and aplastic anemia (9.5%) as noted in the present study (18.51% & 7.4%) respectively.

On analyzing the age distribution among hyperdestructive and hypoproliferative groups, it was observed that 63.1% of cases in the hyperdestructive group were found to be in the first three decades of life. Of these cases, a majority were in the first decade (27.6%), followed by a nearly equal distribution of cases (19% and 16.5%) in the second and third decades respectively. This distribution could be explained by the pattern of cases encountered, where most cases belonged to ITP, dengue, and sepsis which are all known to occur more commonly in this age range.<sup>7,8,9</sup> Similarly, 48.2 % of cases in the hypoproliferative group were found between the second to fifth decades of life where commonly encountered cases were those of megaloblastic anemia and acute myeloid leukemia which are more common in these age groups.<sup>10,11</sup>

A male predominance was seen in hyperdestructive group (58.4%) while a slight female predominance was noted in hypoproliferative group (51.9%). The majority of the cases in hypoproliferative group were cases of megaloblastic anemia which is known to have a female preponderance, especially in the reproductive age group.<sup>12</sup> In contrast to our study, Kaito et al found a female preponderance in both the groups studied (51.3% and 67.5%) respectively.<sup>13</sup> The prominent difference in the hypoproliferative group noted by Kaito et al<sup>12</sup> could be a result of the smaller sample size and the bulk of cases (49.4%) being ITP which is known to be frequent among females.

Hypoproliferative thrombocytopenia group recorded a lower mean platelet count. A similar finding was seen in the study by Vidyadhar et al.<sup>5</sup> Contrary to this, Parveen et al and Elsewefy et al did not find any significant difference between the mean platelet count and the type of thrombocytopenia.<sup>2,14</sup> These discrepancies could be related to the wide range of cases encountered in each study. Elsewefy et al studied only ITP cases in their hyperdestructive group.<sup>14</sup>

MPV is an analyzer-calculated measure of thrombocyte volume. In our study, hyperdestructive group showed a higher mean MPV ( $10.71 \pm 1.21$ ) when compared to the hypoproliferative group ( $9.03 \pm 1.16$ ). In hyperdestructive cases, there is accelerated platelet destruction in the

periphery leading to increased platelet production in the marrow. This results in the release of many young, large, and immature platelets in the blood which tend to become smaller over 7 – 10 days. These younger platelets are active functionally, metabolically, and enzymatically compared to smaller ones.<sup>15</sup> On activation platelets change shape from biconcavediscs to spherical which ultimately causes MPV to rise.<sup>1</sup> This shows that MPV can be used as an early marker to detect the platelet function, production rate, and activation.<sup>16</sup> Vidyadhar et al<sup>5</sup> and Norasethada et al<sup>17</sup> also established a significant difference in MPV values between the two groups. However, a study done by Khanna et al<sup>18</sup> did not find a significant difference between the mean MPV value among the two groups. Their study proposed that a combined evaluation of all the platelet parameters along with newer entities like reticulated platelet count could give a better idea about the mechanism of thrombocytopenia.<sup>18</sup>

PDW is an indicator of variability in platelets size and ranges from 8.0–14.0 fL.<sup>13</sup> Present study had a mean PDW of  $15.18 \pm 4.0$  in hyperdestructive group while  $13.54 \pm 3.38$  in hypoproduative group which was statistically significant with a p-value of  $<0.001$ . This high PDW in hyperdestructive thrombocytopenia is largely due to the release of a heterogeneous population of platelets having variable sizes attributable to the pseudopodia formation during platelet activation. These findings were similar to the study done by Khairkar et al and Singh et al.<sup>19,20</sup> Contrary to this, Parveen et al and Chinthalapudi et al did not find any significant difference in PDW values among the two groups.<sup>21</sup> In the study done by Chinthalapudi et al even though the mean PDW values ( $14.41 \pm 4.00$ ) were similar to our study ( $13.54 \pm 3.38$ ) in hypoproduative group, they did not find a significant difference from the hyperdestructive group. They suggested that the variations could be attributable to the varied types of hematology analyzers utilized in different trials.<sup>21</sup> Babu et al also noticed increased platelet heterogeneity in both hyperdestructive and hypoproduative thrombocytopenia.<sup>22</sup>

The normal reference range for P-LCR is 10–30%.<sup>18</sup> Our study had a mean P-LCR of  $31.39 \pm 7.23$  in hyperdestructive group and  $27.02 \pm 6.81$  in hypoproduative group which was statistically significant. P-LCR represents the percentage of all platelets having a volume of more than 12 fl; thus, the values are higher in hyperdestructive cases compared to its hypoproduative counterpart. Kaito et al, Elsewefy et al and Islam et al also got similar results of higher P-LCR values in ITP patients compared to hypoproduative thrombocytopenic patients.<sup>13,14,23</sup>

ROC curve is a graphical representation of sensitivity on the y-axis and specificity on the x-axis for varying cut-off points of test values. Thus, the area under the ROC curve is a useful metric for calculating the validity of a diagnostic test. A shift of the ROC curve to the upper left always indicates a better test.<sup>24</sup>

In the study, ROC curves plotted for platelet indices showed a left shift with the highest Area Under the Curve (AUC) for MPV (0.846), followed by P-LCR (0.649), and lastly PDW (0.611). As a result, MPV may be considered the most effective metric for distinguishing hyperdestructive from hypoproduative groups. Negash et al also recorded a higher AUC for MPV (0.876) and P-LCR (0.816) in comparison to PDW (0.708) in identifying ITP cases.<sup>25</sup> Similar findings were observed by Vidyadhar et al where he found AUC for MPV (0.99) to be the highest followed by Plateletcrit (0.85) and PDW (0.54) at MPV cut off of  $>10$  fl, PDW cut off  $>18$  and Plateletcrit  $>0.75\%$ .<sup>5</sup> Contrary to this finding, Kaito et al who evaluated only ITP and aplastic anemia cases observed the highest AUC for PDW (9343.4) followed by P-LCR (9305.0) and MPV (9104.8).<sup>13</sup>

Disparities between various studies evaluating platelet indices in thrombocytopenia could stem from pre-analytical and analytical variables. Common preanalytical variables include; the method of venipuncture, anticoagulant used, interval time between the blood collection and analysis & time between the symptom onset and blood tests done. For analytical variables, a lack of harmonization among different analyzers may play an important role. The measurement techniques (impedance or optical) used along with instrument calibration can all lead to variations in platelet indices. Literature suggests that there is minimal variation in platelet count when different technologies are used, however, there is significant variance observed in platelet indices. Variations in hematology analyzers across different centers should be viewed as a constraint in comparing the platelet indices documented in various studies.<sup>1</sup>

**Limitations of the study:** One of the drawbacks of our study was the lesser number of cases in hypoproduative group. A higher number of cases would help in yielding better reproducible results. Since ours was a single-center study in a limited population, research of greater scale and a meta-analysis of numerous studies would be more helpful to demonstrate the therapeutic importance of these parameters.

**Conclusion:** Knowledge about the variation of platelet indices in thrombocytopenia cases will help in avoiding invasive bone marrow examination and unnecessary interventions. Changes in platelet volume indices can provide the clinician with an initial clue about the possible mechanism of thrombocytopenia. In our study, out of the three platelet indices, MPV with the highest area under the curve had the maximum sensitivity and specificity in differentiating hyperdestructive from hypoproduative cases. In the future, the diagnostic accuracy of platelet indices in the differential diagnosis of thrombocytopenia can be substantially increased by higher quality research designs and standardized measurements for platelet indices.

**Conflict of Interest: NIL**

## REFERENCES:

1. Budak YU, Polat M, Huysal K. The use of platelet indices, plateletcrit, mean platelet volume and platelet distribution width in emergency non-traumatic abdominal surgery: a systematic review. *Biochemia medica*. 2016 Jun 15;26(2):178-93. [Crossref](#)
2. Parveen S, Vimal M. Role of platelet indices in differentiating hypoproduative and hyperdestructive thrombocytopenia. *Annals of Pathology and Laboratory Medicine*. 2017 Jun 13;4 (3):288-291. [Crossref](#)
3. Nelson III RB, Kehl D. Electronically determined platelet indices in thrombocytopenic patients. *Cancer*. 1981 Aug 15;48(4):954-6. [Crossref](#)
4. Chabra G. Automated hematology analyzers. Recent trends and applications. *J Lab physicians* 2018; 10:15-16. [Crossref](#)
5. Vidyadhar S. Diagnostic Implication and utility of Platelet Indices in Differentiating Hypoproduative and Hyperdestructive Thrombocytopenia. *IOSR-JDMS*; Volume 18 (8). August. 2019: 07-11. [Crossref](#)
6. Gulati I, Kumar H, Sheth J, Dey I. Diagnostic implication of mean platelet volume in thrombocytopenia. *Medical Journal of Dr. DY Patil University*. 2017 Jul 1;10(4):370. [Crossref](#)
7. Terrell DR, Beebe LA, Vesely SK, Neas BR, Segal JB, George JN. The incidence of immune thrombocytopenic purpura in children and adults: a critical review of published reports. *American journal of hematology*. 2010 Mar;85(3):174-80. [Crossref](#)
8. Thai KT, Nishiura H, Hoang PL, Tran NT, Phan GT, Le HQ, Tran BQ, Van Nguyen N, de Vries PJ. Age-specificity of clinical dengue during primary and secondary infections. *PLoS Negl Trop Dis*. 2011 Jun 21;5(6):11-18. [Crossref](#)
9. Rudd KE, Johnson SC, Agesa KM, Shackelford KA, Tsoi D, Kievlan DR, Colombara DV, Ikuta KS, Kisssoon N, Finfer S, Fleischmann-Struzek C. Global, regional, and national sepsis incidence and mortality, 1990-2017: analysis for the Global Burden of Disease Study. *The Lancet*. 2020 Jan 18;395(10219):200-11. [Crossref](#)
10. Khanduri U, Sharma A. Megaloblastic anaemia: prevalence and causative factors. *Natl Med J India*. 2007 Jul-Aug;20(4):172-5. PMID: 18085121
11. Appelbaum FR, Gundacker H, Head DR, Slovak ML, Willman CL, Godwin JE, Anderson JE, Petersdorf SH. Age and acute myeloid leukemia. *Blood*. 2006 May 1;107(9):3481-5. [Crossref](#)
12. Socha DS, DeSouza SI, Flagg A, Sekeres M, Rogers HJ. Severe megaloblastic anemia: Vitamin deficiency and other causes. *Cleveland clinic journal of medicine*. 2020 Mar 1;87(3):153-64. [Crossref](#)
13. Kaito K, Otsubo H, Usui N, Yoshida M, M Tanno J, Kurihara E, et al. Platelet size deviation width, platelet large cell ratio and mean platelet volume have sufficient sensitivity and specificity in the diagnosis of thrombocytopenia. *British journal of haematology* 2005; 128: 698-702. [Crossref](#)
14. Elsewefy DA, Farweez BA, Ibrahim RR. Platelet indices: Consideration in thrombocytopenia. *The Egyptian Journal of Haematology*. 2014 Jul 1;39(3):134-138. [Crossref](#)
15. Peddaverannagari T, Chakkirala N, Prabhala S, Deshpande A. Utility of platelet count and platelet indices in the evaluation of thrombocytopenia. *J Evid Based Med Healthc*. 2020 Dec 7;7(49):2974-980. [Crossref](#)
16. Kottke-Marchant K, Corcoran G. The laboratory diagnosis of platelet disorders: an algorithmic approach. *Arch Pathol Lab Med*. 2002;126(2):133-146. [Crossref](#)
17. Norrasethada L, Khumpoo W, Rattarittamrong E, Rattanathammethee T, Chai-Adisaksopha C, Tantiworawit A. The use of mean platelet volume for distinguishing the causes of thrombocytopenia in adult patients. *Hematology reports*. 2019 Feb 19;11(1). [Crossref](#)
18. Khanna R, Deepak NM, Manohar C, Dhar M. A retrospective evaluation of mean platelet volume as a discriminating factor in thrombocytopenia of hypoproduative and hyperdestructive aetiologies. *Journal of Evolution of Medical and Dental Sciences*. 2013 Nov 25;2(47):9059-66. [Crossref](#)
19. Khairkar PS, Pandey A, More S, Pandey M. Platelet Distribution Width (PDW)-A Rarely Studied Platelet Indices for Determining the Causes of Thrombocytopenia. *Annals of International Medical and Dental Research*. 2016;2(4):193-7. 2016;2(4):193-7. [Crossref](#)
20. Singh S K, Kumar T, Sinha A K, Kumari A, Singh A R. Platelet Distribution Width-Platelet indices for determining the cause of thrombocytopenia. *Indian Journal of Clinical Practice*. 2019; 29 (11):1038-42. [Crossref](#)
21. Chinthalapudi DC, Yeliker BR, Mulimani MS, Konduru AR, Nerune SM. Predictive Value of platelet indices for differentiating hyperdestructive thrombocytopenia from hypoproduative thrombocytopenia in patients attending tertiary care hospital. *Annals of Pathology and Laboratory Medicine*. 2020;7(3):112-8. [Crossref](#)
22. Babu E, Basu D. Platelet large cell ratio in the differential diagnosis of abnormal platelet counts. *Indian J PatholMicrobiol*. 2004;47(2):202-5. PMID: 16295468
23. Islam S, Islam MS, Ahmed MU, Aziz MA, Begum M. Role of mean platelet volume (MPV), platelet distribution width (PDW), and platelet large cell ratio (P-LCR) value in the diagnosis of immune thrombocytopenic Purpura. *HematolTransfus Int J*. 2016;2(2):1-5. [Crossref](#)
24. Kumar R, Indrayan A. Receiver operating characteristic (ROC) curve for medical researchers. *Indian pediatrics*. 2011 Apr;48(4):277-87. [Crossref](#)
25. Negash M, Tsegaye, Medhin A. Diagnostic predictive value of platelet indices for discriminating hypoproduative versus immune thrombocytopenia purpura in patients attending a tertiary care teaching hospital in Addis Ababa, Ethiopia. *BMC Hematology*. 2016;16(5):18-26. [Crossref](#)