





Research Article

Epidemiology of Camel Brucellosis Intended for Export from Kassala State – Eastern Sudan

Hussein M. Bashir¹ , Hatim Hamad Abraheem^{2*} , Maha Ibrahim Khogly², Eslah Abdelhabib Dafaallh², Salah Hassan Idris², Hussam Aldeen Mustafa Abdelrazig Bilal², Yassir Adam Shuaib³, Nada Elamein Mohammed³, Mohamed Abdelsalam Abdalla⁴

¹Gadarif state ministry of livestock, Sudan

²Central veterinary research laboratory, Madani St, Khartoum, Sudan

³Wad Medani Veterinary Research Laboratory, Sudan

⁴University of Sudan faculty of veterinary medicine, Sudan

Article Information

Received: 18 September 2022

Revised version received: 15 December 2022

Accepted: 19 December 2022

Published: 30 December 2022

Cite this article as:

H.M. Bashir et al. (2022) *Int. J. Appl. Sci. Biotechnol.* Vol 10(4): 216-220. DOI: [10.3126/ijasbt.v10i4.48495](https://doi.org/10.3126/ijasbt.v10i4.48495)

*Corresponding author

Hatim Hamad Abraheem,
Central veterinary research laboratory, Madani St,
Khartoum, Sudan
Email: nadaelamin@yahoo.com

Peer reviewed under authority of IJASBT

©2022 International Journal of Applied Sciences and Biotechnology

OPEN ACCESS



This is an open access article & it is licensed under a Creative Commons Attribution Non-Commercial 4.0 International (<https://creativecommons.org/licenses/by-nc/4.0/>)

Keywords: Camel Brucellosis; cELISA

Abstract

This study was designed to determine the seroprevalence rate of Brucellosis and to identify the risk factors for Brucella infection in camels intended for export from Kassala State. A total of 400 blood samples were collected for serum from all Kassala localities, tested using Rose Bengal Plate test (RBPT) and Competitive Enzyme Linked Immunosorbent Assay (cELISA). The prevalence rate was (29.5 %) and (27.8%) based on the results of RBPT and C.ELISA respectively. According to sex, the prevalence rate of the disease was (30.4%) out of 335 in males and (24.6%) out of 65 in females. There were no clinical signs of camel's Brucellosis in all tested animals. The prevalence of the disease was (14.4%) in Rural KhashmElgerba, (15.3%) in North Delta, (8.5%) in Wad Elhilau, Rural Kassala (11.9%), Hamashkoreb (12.7%), Rustic Arouma (14.4%), Talkook (16.9%) and Atbra river locality (5.9%) with a significant statistical difference. Herds with more than 20 camels were more frequently affected. In this study the Seroprevalence of Brucella was (9.3 %) in young (1-2 years) and (23.7%) in adult camels (above 5 years). The results of the present study provide the status of seropositivity to Brucella in camels intended for export in Kassala State and the risk factors that contribute to prevalence of Brucellosis among camels. This situation requires more attention and effort to implement.

Introduction

Brucellosis is a common bacterial zoonotic disease that has important veterinary and public health concerns and economic impact (Sayour *et al.*, 2015; Nielsen, 2002; OIE, 2016). It is worldwide spread, particularly in Middle East, Mediterranean countries, Africa, Asia, Arabian Gulf,

Central and South Americas (OIE, 2012). Brucella microorganisms localize in the supra-mammary lymph nodes and mammary glands of the infected animals and thus may continue to be secreted in the milk throughout the life (Bamaiyi *et al.*, 2012). The susceptibility of animals to Brucellosis depends on their natural resistance, age, level of

immunity, and environmental stress (Capasso, 2002). The disease is responsible for enormous economic losses in affected animals due to abortions, infertility premature birth, reduced reproduction and drop in milk production. It is also represents a great public health problem in endemic areas (Corbel, 2006; Pappas et al., 2006). Moreover, the disease poses a barrier to trade of animals and animal products, an impediment to free animal movement (Zinsstag et al., 2011).

In Sudan camels are important for meat, milk and export to gain foreign currency. Epidemiology of brucellosis among sheep, goats and camels was done in Gadarif state which indicated the presence of the Brucella antibodies with varied rates (Mahasin et al., 2017; Adam et al., 2017; Abdalla et al., 2019). This study was designed to evaluate the prevalence of the disease in camels intended for export in Kassala State, implementation of well-organized disease control and prevention methods must be undertaken to mitigate its impacts. And to determine the prevalence of Brucellosis in camels that ready for export in Kassala quarantine, Kassala State. - To identify the risk factors associated with the disease occurrence in Kassala State.

Material and Methods

Study Area

This study was carried out in Kassala State which is located in the East of the Sudan, covers an area of about (42,282) square kilometers. The State is divided to nine localities; the capital of the State is Kassala town. Kassala State has a large livestock population estimated in 2018 as (4.540.250) camel- cattle- Sheep and goats of which (490.000) head of cattle and (1.700.651) head of camels, (1.401.000) head of sheep and (948.600) head of goats which has different breeds (Ministry of Agriculture and Animal Resources, Kassala State, 2018). The study was conducted in all Kassala localities, Rustic KhashmElgerba, North Delta, Wad elhilau, Rustic Kassala, Hamashkoreb, Rustic Aroma, Talkook and Atbra river locality.

Collection of Samples

A total of (400) blood samples were collected for serum from camels, which 50 samples of sera from each locality in Kassala State. Five ml of blood were collected aseptically from the jugular vein in sterile tubes using a disposable syringe after disinfecting the area with 70% alcohol. Tubes were placed in slanting position and left to clot, then taken

to the laboratory on ice and placed in the refrigerator for overnight, serum was separated into Bijou bottles and kept at -20 °C.

Rose Bengal Plate Test (RBPT)

The serum samples were screened using Standardized buffered Rose Bengal Test antigen for detection Brucella antibodies, the test was carried out as described by (Alton et al., 1988).

Competitive Enzyme Linked Immuno Sorbent Assay (cELISA)

The test was performed using Svanovir® brucella-Ab (cELISA) kit for detection of antibodies against Brucella in sera samples according to the instructions of manufacturer.

Statistical Analysis

Statistical analysis was performed using ‘Statistical package for the social sciences’ (SPSS), version 16.0 software for windows (SPSS Inc., Chicago, IL, USA). All risk factors with $p \leq 0.05$ were considered significant (5ml) – 0.05% Merthiolate. - Negative control sera (5ml) – 0.05% Merthiolate.

Results

Data shown in Table 1 to 4 and Fig. 1-2 show that the prevalence of camel Brucellosis in Kassala State was (29.5%) and (27.8%) based on the results of RBPT and cELISA respectively (Table 1 & 2). The presence of seropositive camels was significantly associated with the variables: location, age, mixed rearing, water sources and herd size. The location of camel rearing (locality) showed significant association with the prevalence of Brucellosis, however the occurrence of the disease was slightly higher in Tlkook (16.9%) and low in Atbara River (5.9%). Regarding the location of camel rearing (locality) showed significant association with the prevalence of Brucellosis, the occurrence of the disease was slightly higher in Tlkook (16.9%) and low in Atbara River (5.9%), the prevalence was lower among the young animals screened in this study compared to the older ones. In this observation Seroprevalence of Brucellosis was (9.3%) in young camels and (23.7%) in adult camels., Percentage of infected male was about 25.5% and the percentage of infected females was about 4%, in this study, Brucellosis was more prevalence in males than females as the number of female animals examined was small (Fig. 1 & Fig. 2).

Table 1: Results of RBPT in serum samples of camels intended for export in Kassala quarantine.

No. inspected	Total of serum samples	Positive	Positive%
Male of camels	335	102	30.4%
Female of camels	65	16	24.6%
Total	400	118	29.5%

Table 2: Results of cELISA in serum samples of camels intended for export in Kassala quarantine.

No. inspected	Total of serum samples	Positive	Positive%
Male of camels	335	94	28.1
Female of camels	65	17	26.2
Total	400	111	27.8

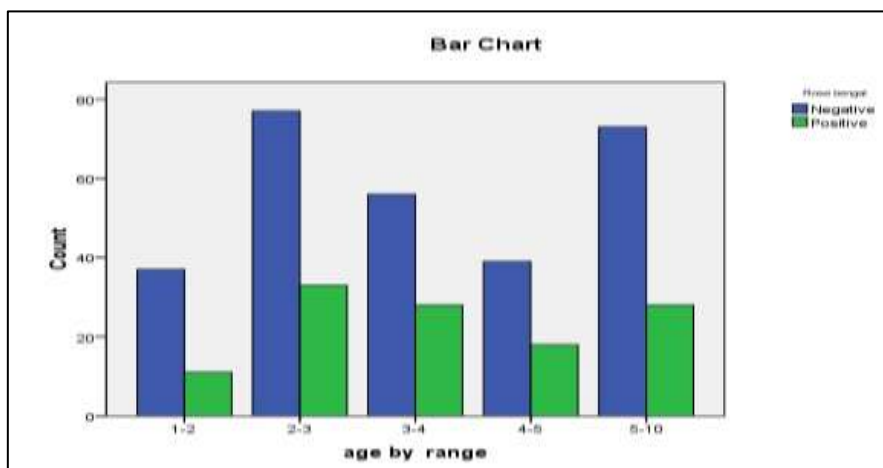


Fig 1: Prevalence of Brucellosis according to age of animals using RBPT

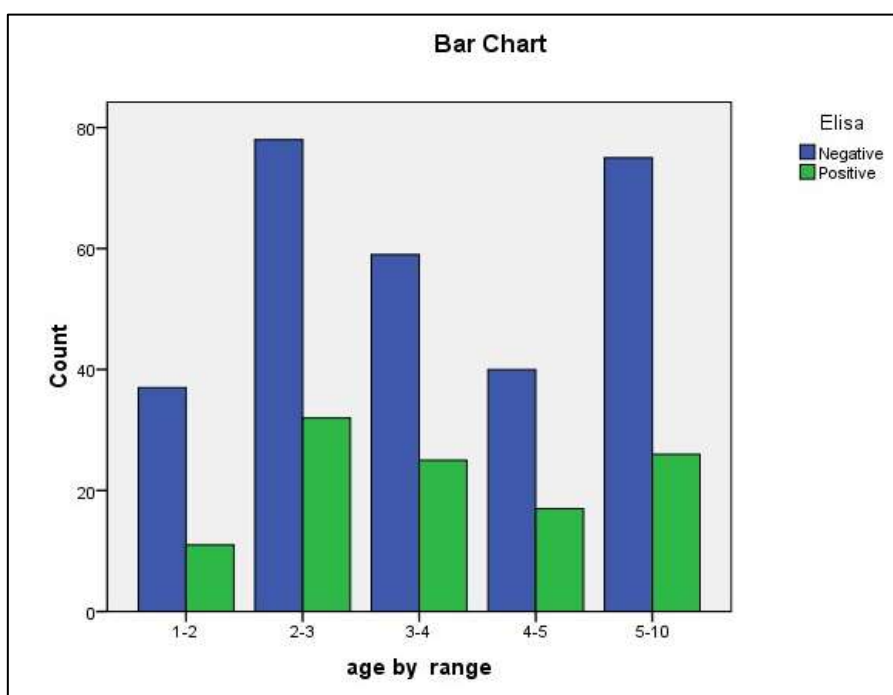


Fig 2: Prevalence of Brucellosis according to age of animals using ELISA

Table 3: Comparison between RBPT and ELISA results using Kappa test

Test	RBPT		Total
	Negative	Positive	
ELISA Negative	279	10	289
ELISA Positive	3	108	111
Total	282	118	400
Kappa = .92			

Table 4: The relationship between presence of Brucellosis and, sex, age and location among the camels examined in Kassala State

Risk factors	Rose Bengal			ELISA		
	Df	Chi square	p-value	Df	Chi square	p-value
Sex	1	890 ^a	.345	1	.099 ^a	.753
Age	4	1.879 ^a	.758	4	1.153 ^a	.886
location	7	14.291 ^a	.046	7	10.063 ^a	.185

Discussion

Sudan exports sheep, goats, camels and cattle to many countries especially to Saudi Arabia and other Arabic Gulf countries. Brucellosis was the main cause for rejection of livestock vessels. The reason for these strict quarantine measures is attributed to the fact that the disease represents a public health hazard, because of the zoonotic nature of this disease.

In this study the prevalence of camel Brucellosis in Kassala State was (29.5%) and (27.8%) based on the results of RBPT and cELISA respectively. The presence of seropositive camels was significantly associated with the variables: location, age, mixed rearing, water sources and herd size. The location of camel rearing (locality) showed significant association with the prevalence of Brucellosis, the occurrence of the disease was slightly higher in Tikook (16.9%) and low in Atbara River (5.9%). These variations and differences may be attributed to husbandry, management practice, lack of awareness, and uncontrolled movement of camels from place to another. These results were in agreement with that recorded by Teshome *et al.*, (2003), Al-Majali *et al.*, (2008).

Mixed rearing of camels with other ruminants (cattle, sheep and goats) showed a significant association on the prevalence of camel brucellosis. The present result was supported by that recorded by Al-Majali *et al.*, (2008) who suggested the role of small ruminants for dissemination of Brucellosis. Herd size was also affecting the seropositivity of Brucella on animal level. Herds with more than 20 camels were more frequently affected. This result was in agreement with that previously reported by Abbas and Agab (2002), Bati (2004), Al-Majali *et al.* (2008) and Mohammed *et al.* (2011). It was suggested that more contact between camels may occur in large herds than smaller ones. The prevalence was lower among the young animals screened in this study compared to the older ones. In this observation Seroprevalence of Brucellosis was (9.3%) in young camels and (23.7%) in adult camels. The same results were recorded by Musa and Shigidi (2001), Bati (2004), AlMajali *et al.* (2008), Dawood (2008), Omer *et al.* (2010) and Swai *et al.*, (2011). Usually, young animals are protected by maternal immunity, thus susceptibility seems to be low

among them. Also, older camels are more exposed the presence of growth factors such as Erytheritol and hormones favor infection in mature animals. The high prevalence seen in the older animals was demonstrating the chronic nature of Brucellosis. Percentage of infected male was about 25.5% and the percentage of infected females was about 4%, in this study, Brucellosis was more prevalence in males than females as the number of female animals examined was small.

Conflict of Interest

The authors have declared that no competing interests exist.

Acknowledgements

This work was carried out at Gadarif regional laboratory, Central Veterinary Research Laboratory, Soba (Animal Resources Research Corporation ARRC).

Author's Contribution

HM. Bashir, HH Abraheem, MI Khogly, YA Shuaib, NE Mohammed & MA Abdalla designed the research plan; HM. Bashir, MI Khogly & HAMA Bilal performed experimental works & collected the required data. All authors jointly prepared the manuscript. Final form of manuscript was approved by all authors.

Conflict of Interest

The authors declare that there is no conflict of interest with present publication.

References

- Abbas B and Agab H (2002) A review of camel Brucellosis. *Preventive Veterinary Medicine* **55**: 47-56. DOI: [10.1016/S0167-5877\(02\)00055-7](https://doi.org/10.1016/S0167-5877(02)00055-7)
- Abdalla MA, El-Sanousi EM, Shuaib YA, Ibrahaem HH, Fadle-Al-Mola KM, Mohamed-Noor SE, Suliman SE, Idris SH, Abdalla MA. (2019) Sero-prevalence of brucellosis in sheep in El-Gadarif state. *EC Vet Sci* **4**(1):15-19. DOI: [10.5455/javar.2017.d205](https://doi.org/10.5455/javar.2017.d205)
- Adam KB, Ibrahaem HH, Shuaib YA, Mohamed-Noor SE, Elgadal AA, Shigidi MT, Nimir AH (2018) Sero-prevalence of anti-brucella antibodies in goats in El-Gedarif state, Eastern Sudan. *ARC Journal of Animal and Veterinary Sciences* **4**(1):1-8. DOI: [10.20431/2455-2518.0401001](https://doi.org/10.20431/2455-2518.0401001)

- AMajali AM, Al-Qudah KM, Al-Tarazi YH and ALRawshdeh OF (2008) Risk Factors Associated with Camel 45 Brucellosis in Jordan. *Tropical Animal Health and Production* **40**:193-200. DOI: [10.1007/s11250-007-9080-7](https://doi.org/10.1007/s11250-007-9080-7)
- Bamaiyi PH, Hassan L, Khairani-Bejo S, Zainal Abidin M, Ramlan M, Krishnan N, Adzhar A, Abdullah N, Hamidah NH, Norsuhanna MM, Hashim SN (2012) Isolation and molecular characterization of *Brucella melitensis* from seropositive goats in Peninsula Malaysia. *Trop Biomed* **29**(4):513-518.
- Bamaiyi PH, Hassan L, Khairani-Bejo S, Zainal Abidin M, Ramlan M, Krishnan N, Adzhar A, Abdullah N, Hamidah, NHM, Norsuhanna, MM and Hashim, SN (2012): Isolation and molecular characterization of *Brucellamelitensis* from seropositive goats in Peninsula Malaysia *Trol Biomedicine* **29**(4): 513–518.
- Bang B (1897) The etiology of epizootic abortion. *J Comp Path Therap* **10**: 125-150. DOI: [10.1016/S0368-1742\(97\)80014-8](https://doi.org/10.1016/S0368-1742(97)80014-8)
- Bati BB (2004) Sero-epidemiological Study of Brucellosis in Camels (CAMELUS DROMEDARIUS) in Borena Lowlands Pastoral Areas Southern Ethiopia. <http://etd.aau.edu.et/dspace/bitstream/123456789>.
- Capasso L (2002) Bacteria in two-millennia-old cheese, and related Epizoonoses in Roman population. *j. Infect.*, **45**:122-127. DOI: [10.1053/jinf.2002.0996](https://doi.org/10.1053/jinf.2002.0996)
- Cho D, Nam H, Kim J, Heo E, Cho Y, Hwang I, Kim J, Kim J, Jung S, More S. (2010) Quantitative rose Bengal test for diagnosis of bovine brucellosis. *Journal of Immunoassay and Immunochemistry* **31**(2):120-130. DOI: [10.1080/15321811003617420](https://doi.org/10.1080/15321811003617420)
- Corbel MJ (2006) *Brucellosis in humans and animals*. Geneva Switzerland: World Health Organization.
- Dawwod AH (2008) Brucellosis in Camels (CAMELUS DROMEDARIUS) in the South Province of Jordan. *American Journal of Agricultural and Biological Sciences* **3**(3):623-626. DOI: [10.3844/ajabssp.2008.623.626](https://doi.org/10.3844/ajabssp.2008.623.626)
- Mohamed AO, Atif EA. (2012) Detection of brucellosis in sheep intended for export and local slaughter in Khartoum State, Sudan. *African Journal of Microbiology Research* **6**(39):6805-6810. DOI: [10.5897/AJMR12.1423](https://doi.org/10.5897/AJMR12.1423)
- Mohammed O, Megersa B, Abebe R, Abera M, Regassa A, Abdrehman Y and Mekuria S (2011) Seroprevalence of brucellosis in camels in and around Dire Dawa city, Eastern Ethiopia. *Journal of animal and veterinary advances*. **10**(9):1177-1183. DOI: [10.3923/javaa.2011.1177.1183](https://doi.org/10.3923/javaa.2011.1177.1183)
- Musa MT and Shigidi MTA (2001) Brucellosis in Camels in Intensive Animal Breeding Areas of Sudan. Implication in Abortion and Early Life Infections. *Revue d'elevage et Medicine Veterinaire des pays Tropicaux* **54**: 11-15. DOI: [10.19182/remvt.9799](https://doi.org/10.19182/remvt.9799)
- Nielsen K (2002) Diagnosis of Brucellosis by serology. *Vet Microbiol* **90**(1):447–459. DOI: [10.1016/S0378-1135\(02\)00229-8](https://doi.org/10.1016/S0378-1135(02)00229-8)
- Office international des epizooties OIE (2016) *Brucellosis (Brucella abortus, Br. melitensis and Br.suis) (infection with Br. abortus, Br. melitensis and Br. suis)*. OIE Manual of Diagnostic Tests and Vaccines for Terrestrial Animals, Paris, p. 1–44, Chapter 2.1.4.
- Omer MM, Musa MT, Bakhiet MR and Perrett L (2010) Brucellosis in Camels, Cattles and Humans: Associations and Evaluation of Serological Tests Used for Diagnosis of the Disease in Certain Nomadic Localities in Sudan. *Review of Scientific Technology, Office of International Epizootics* **29**(3): 663-669. DOI: [10.20506/rst.29.3.2003](https://doi.org/10.20506/rst.29.3.2003)
- Pappas G, Papadimitriou P, Akritidis N, Christou L, Tsianos EV (2006) The new global map of human Brucellosis. *Lancet Infectious Diseases* **6**: 91-99. DOI: [10.1016/S1473-3099\(06\)70382-6](https://doi.org/10.1016/S1473-3099(06)70382-6)
- Sayour AE, Elbauomy EM, El-Kholi MK, Abeer AE, Shehata (2015). Brucellosis Prevalence and Serologic Profile of Male One-Humped Camels Reared in Somaliland and Eastern Ethiopia for Meat Production. *Global Vet* **14**: 67-76.
- Teshome H Molla B Tibbo M (2003) Seroprevalence Study of Camel Brucellosis in Three Camel Rearing Regions of Ethiopia. *Tropical Animal Health and Production* **35**: 381-390. DOI: [10.1023/A:1025874310261](https://doi.org/10.1023/A:1025874310261)
- Zinsstag J, Schelling E, Solera X, Blasco J and Moriyon I (2011): *Brucellosis*. Oxford Textbook of Zoonosis. Pp. 54-64. DOI: [10.1093/med/9780198570028.003.0007](https://doi.org/10.1093/med/9780198570028.003.0007)