

Study of biofilm formation among uropathogens isolated from catheter-associated UTI patient from a tertiary care hospital



Retina Paul¹, Priyanka Saha², Kuhu Pal³, Avi Kapoor⁴, Arpita Sinha⁵, Joydip Roy⁶

¹Associate Professor, ²Assistant Professor, ³Professor and Head, ⁴3rd Professional MBBS Student, ⁵Demonstrator, Department of Microbiology, College of Medicine and JNM Hospital, Kalyani, ⁶2nd Year M.Sc. Student, Department of Microbiology, Acharya Prafulla Chandra College, New Barrackpore, West Bengal, India

Submission: 12-10-2023

Revision: 30-12-2023

Publication: 01-02-2024

ABSTRACT

Background: Catheter-associated urinary tract infection (CAUTI) is a serious health threat and challenging infection. CAUTI accounts for up to 40% of all nosocomial infections. Biofilm provides a survival strategy to microorganisms and ultimately leads to re-infections and recurrence of urinary tract infections (UTI) despite a full course of antibiotics. **Aims and Objectives:** The present study was conducted to determine the prevalence of CAUTI in suspected UTI patients and prevalence of biofilm-forming uropathogens among CAUTI patients. **Materials and Methods:** The cross-sectional study was done over a period of 6 months among 95 catheterized CAUTI patients. Biofilm production among isolated uropathogens was tested by tissue culture plate, tube test, and congo red agar method. Isolates were identified as biofilm producer if they were tested positive by any one of the all four methods, and isolates were considered biofilm non-producer in consensus with all four methods. **Results:** In this study, the prevalence of CAUTI was 68.42%. Among 65 isolates most common uropathogen was 28 (43.07%) *Escherichia coli*. In this present study, the prevalence of biofilm-forming uropathogens was 58.46% (38). Tissue culture plate was the most sensitive (97.36%) method in detecting biofilm formation followed by modified congo red agar (82.21%), congo red agar (71.05%), and tube test (65.78%). Biofilm productions were significantly associated with female gender, diabetes, and prolonged catheterization. **Conclusion:** Indwelling urinary catheter acts as a nidus for biofilm formation among microorganisms. Duration of catheterization is inversely associated with UTI. Hence, the need for catheter removal should be assessed daily to prevent infection. Periodic surveillance should be done to detect biofilm formation where prolonged catheterization is inevitable.

Key words: Biofilm; CAUTI; Uropathogens

Access this article online

Website:

<http://nepjol.info/index.php/AJMS>

DOI: 10.3126/ajms.v15i2.59265

E-ISSN: 2091-0576

P-ISSN: 2467-9100

Copyright (c) 2024 Asian Journal of Medical Sciences



This work is licensed under a Creative Commons Attribution-NonCommercial 4.0 International License.

INTRODUCTION

Urinary tract infections (UTI) are a serious health threat and challenging infection affecting all age group patients which is frequently encountered in clinical practice.¹ Catheter associated urinary tract infection (CAUTI) account for up to 40% of all nosocomial infections.² Urinary catheters are made up with tubular latex or silicone, when inserted, they rapidly acquire biofilms on both outer and inner surfaces.

There are some organisms that commonly colonize over the device and develop biofilms. The common biofilm-forming organisms are *Staphylococcus epidermidis*, *Escherichia coli*, *Enterococcus faecalis*, *Klebsiella pneumoniae*, *Proteus mirabilis*, *Pseudomonas aeruginosa* and other gram-negative bacteria.³ Prolonged catheterization increase the risk of biofilm formation which may lead to UTI. Up to 60% human infections caused due to biofilm formation which is difficult to eradicate with routine antimicrobial therapy.⁴

Address for Correspondence:

Dr. Priyanka Saha, Assistant Professor, Department of Microbiology, College of Medicine and JNM Hospital, Kalyani, West Bengal, India.
Mobile: +91-9231858671. **E-mail:** priyankacmc01@gmail.com

Biofilms are architectural colony of microorganisms within a matrix of extracellular polymeric substances.⁵ Biofilm provides a survival strategy to the bacteria by preserving nutrients and also show significant resistance towards various antimicrobial agents by restricting the diffusion of substances and binding of antimicrobial.⁶ Proximity of cells within a biofilm can facilitate plasmid exchange and transfer of antimicrobial resistant gene from one organism to another and ultimately making the biofilms resistant to most of the antimicrobial agents.⁷

In this scenario, commonly using antibiotics might not have a similar effect toward biofilm-forming bacteria, which ultimately leads to re-infections and recurrence of UTI with further complications despite the full course of antibiotics. To overcome the therapeutic problem, we require some diagnostic methods for the detection of biofilm-forming uropathogens. Despite having many patients with indwelling catheter admitted to hospital, limited study conducted for the detection of biofilm formation among uropathogens in CAUTI patients in this region of West Bengal.

Aims and objectives

The present study was conducted to determine the prevalence of CAUTI among suspected UTI patients and to determine biofilm production among uropathogens in CAUTI patients.

MATERIALS AND METHODS

A cross-sectional observational study was conducted from July to December 2022 among the UTI-suspected indoor catheterized patients admitted in various wards of our institution after taking clearance from Institutional Ethics Committee (REF. NO. F-24/PR/COMJNMH/ICE/22/603). All patients at or above 18 years of age who had indwelling catheter for more than 48 h and had symptomatic UTI (fever $>38^{\circ}\text{C}$ and or urgency, frequency, dysuria) were included in the present study. All non-catheterized patients with symptoms of UTI were excluded from the study. After taking informed consent, a brief clinical history was taken – regarding demography, present complaints, and associated risk factors.

5–10 mL urine samples were collected maintaining aseptic techniques with sterile syringes from distal end of urinary catheter and transferred immediately to a properly labeled sterile container. Then samples were transported immediately to the bacteriology laboratory of the microbiology department and processed within 2 h of collection. All samples were inoculated into MacConkey and Hi-chrome UTI agar media with standard

calibrated loop to determine colony forming unit (CFU). CFU $\geq 10^5$ CFU/mL were considered as significant and further processed.⁸ Identification of isolates was done by colony morphology, Gram stain finding, and standard biochemical tests.⁹ Hi-chrome candida agar and germ tube test were used for the speciation of all isolated *Candida* spp.^{9,10} (Figure 1).

Biofilm production of isolates was tested by tissue culture, Congo red agar, modified Congo red agar, and tube test method.

Tissue culture plate method

In the tissue culture plate method brain heart infusion broth (BHI) with 2% sucrose was placed in tissue culture plates after mixing with isolates. After incubation at 37°C for overnight when turbidity appeared it was diluted with 1 in 100 fresh medium (BHI). Further 0.2 mL diluted medium placed in individual well and incubated again at 37°C for 24 h and then washed 4 times with phosphate buffer saline (PBS) to remove free-floating bacteria. Biofilm formed by adherent organisms fixed with 2% sodium acetate and stained with 0.1% crystal violet for half an hour. The excess stain was rinsed by deionized water and kept for drying. Microassay auto reader with a wavelength of 570 nm was used to determine optical density of adherent stained bacteria¹¹ (Figure 2).

Tube method

A loopful microorganisms were inoculated in BHI with 2% sucrose and incubated overnight at 37°C . Then tubes were decanted, washed with PBS, dried, and stained with crystal violet 0.1% for 30 min. Excess stains were removed and tube dried. Then reading for biofilm formation was taken by the visible lines at the wall and bottom of the tube¹² (Figure 3).

Congo red agar method

Congo red agar media was prepared by BHI agar along with 5% sucrose and congo red powder. Isolates were inoculated and

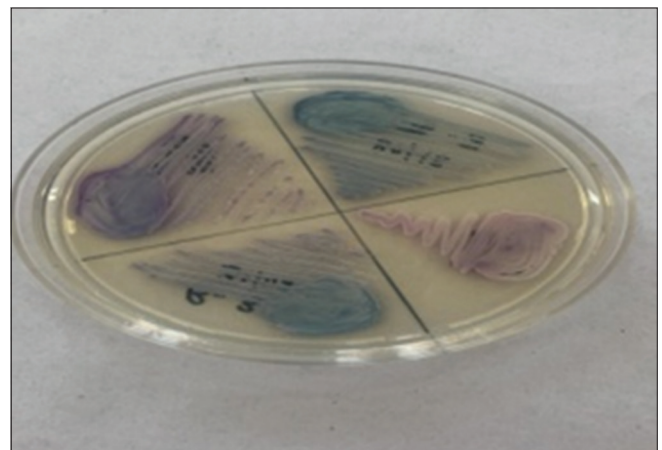


Figure 1: High chrome agar for candida speciation

incubated at 37°C for 24–48 h. Positive results were considered by black colonies with dry crystal consistency (Figure 4).¹³

Modified Congo Red Agar (MCRA) method

MCRA were basically modification of CRA by changing the concentration of Congo red dye and replacement of sucrose by glucose and BHI replaced by nutrient agar.

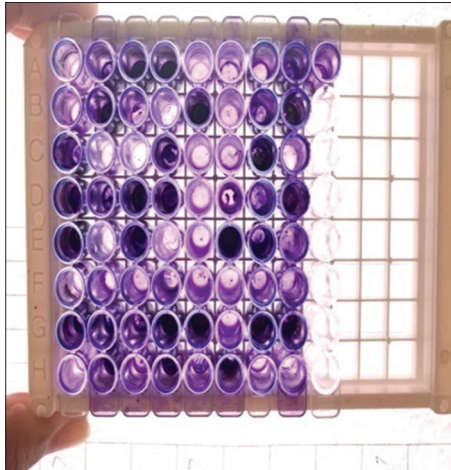


Figure 2: Tissue culture plate method

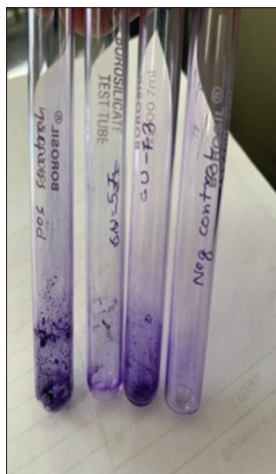


Figure 3: Tube test method

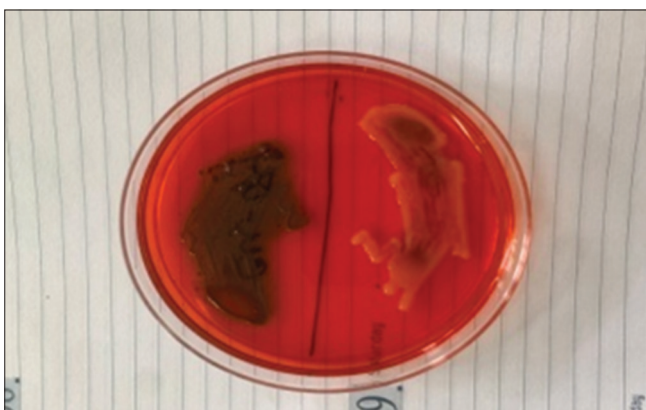


Figure 4: Congo red agar

MCRA plates were inoculated and incubated at 37° for incubate for 48 h followed by another 2–4 days incubation at room temperature¹⁴ (Figure 5).

Isolates were identified as biofilm producer if they were tested positive by any one of the all four methods and isolates were considered biofilm non producer in consensus with all four methods.

Statistical analysis

Analysis of all the data was performed by SPSS software (IBM Corp. Released 2013. IBM SPSS Statistics for Windows, Version 22.0. Armonk, NY: IBM Corp.). Qualitative variables were expressed as mean±standard deviation. Chi-square T-test or Fischer's exact test was used to compare two independent groups as qualitative variables in qualitative data. P<0.05 is considered statistically significant. Here, we considered the Pearson Chi-square value as equivalent to P-value, because it a test for categorical data.

Specificity, sensitivity, positive predictive value (PPV), negative predictive value (NPV) data were calculated and analyzed by MedCalc free trial version 18.9.¹⁵ The PPV and NPV were measured by variables data using true positive, true negative, false positive, and false-negative data analyzed by MedCalc.

Ethics

The present study was conducted after taking approval from the Institutional Ethics Committee (REF. NO. F-24/PR/COMJNMH/ICE/22/603). All patients were adequately explained about our research work and then informed consent was taken before including in our study.

RESULTS

In this study, CAUTI were detected among 65 (68.42%) patients out of 95 suspected patients (Table 1). Overall CAUTI cases were higher among female patients (71.69%) compared to male patients (64.28%).

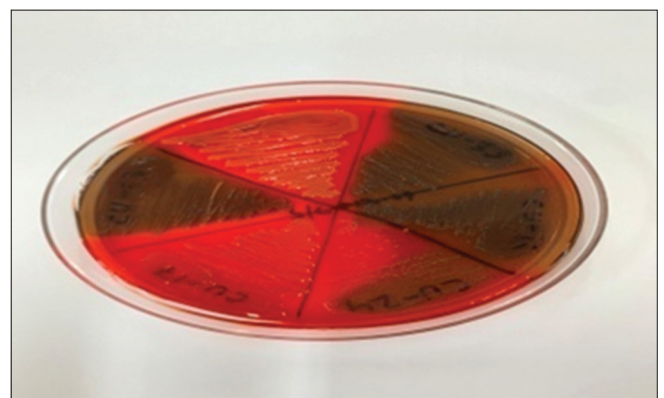


Figure 5: Modified congo red agar method

Table 1: Age- and sex-wise distribution of CAUTI patients

Age groups (years)	Total sample received	Male		Female			Total CAUTI detected (%)	
		Sample received	CAUTI detected	CAUTI detected (%)	Sample received	CAUTI detected		CAUTI detected (%)
18–30	7	3	1	33.33	4	2	50	3 (42.85)
31–45	22	8	4	50	14	9	64.28	13 (59.09)
46–60	36	14	11	78.57	22	18	81.81	29 (80.55)
61–75	18	10	6	60	8	6	75	12 (66.66)
>75	12	7	5	71.42	5	3	60	8 (66.66)
Total	95	42	27	64.28	53	38	71.69	65 (68.42)

CAUTI: Catheter-associated urinary tract infections

In the current study, most common isolates were *E. coli* (43.07%) followed by *Candida spp.* (24.61%), *K. pneumoniae* (13.84%), *Enterococcus spp* (12.30%) (Figure 6).

Out of 16 isolated *Candida spp.* most common species were *Candida albicans* (6), followed by *Candida dubliniensis* (4), *Candida krusei* (3), *Candida parasilopsis* (2), and *Candida tropicalis* (1) according to Hi-chrome *Candida* agar (Figure 1).

In this present study, the prevalence of biofilm-forming uropathogens was 58.46% (38) (Table 2). Tissue culture (97.368%) was the most sensitive method to detect biofilm production among all tested methods.

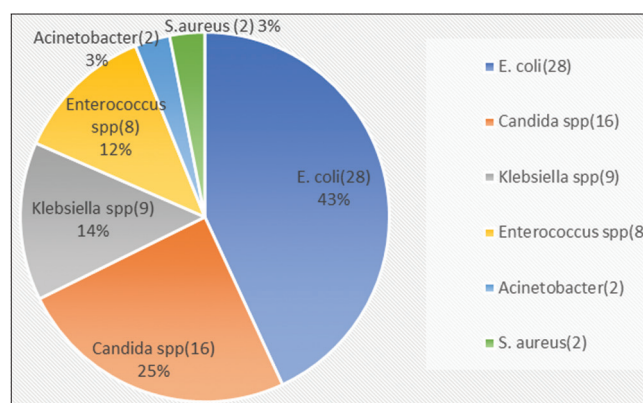
Female CAUTI patients were significantly associated with more biofilm production than male patients (Table 3).

The presence of diabetes and prolonged catheterization (≥ 28 days) were significantly associated with biofilm production in CAUTI patients (Table 4).

DISCUSSION

In the present study, 95 catheterized urine samples were processed and out of which 65 (68.42%) were culture positive. Our result correlated with a study conducted by Sayal et al.,¹⁶ reported 79% culture positivity and Vinoth et al.,¹⁷ reported 70% culture positivity in catheterized sample. Whereas Karkee et al.,¹⁸ and Kulkarni et al.,¹⁹ found lower prevalence of CAUTI at 12.5% and 21.47%, respectively.

In the current study, overall CAUTI cases were higher among female patients (71.69%) compared to male patients (64.28%) (Table 1). A study conducted by Jayasukhbhai et al.,²⁰ and Almalki and Varghese²¹ reported higher incidence (56.46% and 75% respectively) of CAUTI in female patients which are similar to our study. A study

**Figure 6:** Frequency of distribution of causative agents of CAUTI

conducted by Vinoth et al.,¹⁷ Kulkarni et al.,¹⁹ and Sayal et al.,¹⁶ found a predominance of UTI in male patients, respectively 73.07%, 68.18%, and 74.50% which differs from our study. In the present study, the prevalence of UTI is higher in female may be due to high load of periurethral flora in females which got introduced during catheterization.

In the present study, *E. coli* was the most common isolate followed by *Candida spp.*, *K. pneumoniae* and *Enterococcus spp* (Figure 6) Several other studies also revealed *E. coli* as the commonest pathogen ranging from 22 to 70%.^{17,22,23} In contrast to the current study, Ghanwate et al.,²⁴ isolated 50% *P. aeruginosa* as the commonest agent followed by *Enterococcus spp.* (31%), *E. coli* (25%). *Candida* isolates have been also isolated by various investigators.^{17,22} which was the second common isolates in the present study. Variation in the spectrum of pathogen may have happened due to differences in host immunity level, environmental conditions, geographical variance, and previous treatments with antibiotic therapy.

In the present study, 38 (58.46%) isolates were *in vitro* positive for biofilm production among them 7 were candida species (42%) (Table 2) Many studies have shown variable biofilm production ranging from 45 to

Table 2: Screening of CAUTI-positive isolates for biofilm production by four different methods

Method	Biofilm producers		Sensitivity	Specificity	Positive predictive value	Negative predictive value
	Bacteria N1=31	Fungus N2=7				
Tissue culture method	30	7	97.368% (CI 86.190%–99.933%)	100.000% (CI 87.230%–100.000%)	100.000% (CI 90.5112%–100.000%)	96.429% (CI 79.605%–99.467%)
Modified Congo red agar	26	6	84.211% (CI 68.747%–93.977%)	100.000% (CI 87.230%–100.000%)	100.000% (CI 89.112%–100.000%)	81.818% (CI 68.348%–90.364%)
Congo red agar	22	5	71.053% (CI 54.097%–84.575%)	100.000% (CI 87.230%–100.000%)	100.000% (CI 87.230%–100.000%)	71.053% (CI 59.864%–80.156%)
Tube test	21	4	65.789% (CI 48.647%–80.367%)	100.000% (CI 87.230%–100.000%)	100.000% (CI 87.230%–100.000%)	67.500% (CI 57.199%–76.347%)

*CI=Confidence interval

71%.^{16,25,26} Present study correlated well with the study conducted by Chandak et al.²⁷ Similar studies showed 43.3%,²⁸ 60%²⁹ biofilm-producing uropathogens causing CAUTI. In the present study, highest number of biofilm formation was detected by TCP method (n=37, 56.92%). It had missed just one biofilm producer which was detected by MCRA (49.23%) method. Tube method showed 38.46% biofilm-producing isolates in the present study which is similar to the study conducted by Mohamed and Shalakany²⁵ and Niveditha et al.²³ Whereas biofilm formation by CRA (41.53%) method in the present study was quite different from the study of Sayal et al.,¹⁶ and Hassan et al.²⁶ (Table 5).

In the present study highest sensitivity was shown by TCP method 97.37% followed by MCRA 84.21%, CRA 71.05% tube test 65.79% (Table 2). In various studies, TCP method is considered as gold standard technique for the detection of biofilm.³⁰⁻³² In the current study although TCP is the most sensitive method, it is the most expensive, and moreover, individual isolates could not be tested by this method. In the TCP method, all isolates were tested in 96 well tissue culture plates together. Whereas MCRA are relatively easy, inexpensive method to perform a single test. Hence, in resource-poor settings MCRA can be used as an alternative method to TCP.

Female CAUTI patients were more prone to biofilm-forming uropathogens than their male counterpart in the current study (Table 3). It may be due to a higher load of periurethral flora in females which adhere and form biofilm in the presence of indwelling catheter.

In the present study statistically, significant association were found between biofilm production among uropathogens with the patient having diabetes mellitus and prolonged catheterization for ≥ 28 days (Table 4) Our study is comparable with the study conducted by Sayal et al.,¹⁶ and Kulkarni et al.,¹⁹ long term diabetes is commonly associated with altered immunological function and asymptomatic bacteriuria which may facilitate biofilm formation. Prolonged catheterization provides ideal environment for biofilm formation and thus survival benefits for pathogens which may lead to treatment failure. Detection of CAUTI may be due to inadequate precaution taken during the insertion of catheter. Preventive strategies for urinary catheter-associated infections are very limited. It can be prevented using sterile closed collection system, maintenance of aseptic technique during catheter insertion, and maintenance of hand hygiene to reduce cross-infection.³³

Table 3: Gender-wise distribution of biofilm producer and nonproducer uropathogens

Gender	Biofilm producer	Nonbiofilm producer	Total (%)	
Male	8	19	27 (41.5)	P=0.000104 (Fisher's exact test)
Female	30	8	38 (58.5)	
Total	38 (58.5%)	27 (41.5%)	65	

Table 4: Distribution of risk factors among biofilm producer and nonbiofilm producers in CAUTI Patients

Serial no	Risk factors	Total number of patients	Biofilm producer	Non Biofilm producer	P-value
1	Diabetes	36	26	10	P=0.021895 S
2	Hypertension	32	21	11	P=0.316698 NS
3	Renal failure	14	8	6	P=1.000 NS
4	Prolonged catheterization (≥28 days)	11	10	1	P=0.021895 S

S=Significant, NS=Non-significant, CAUTI: Catheter-associated urinary tract infections

Table 5: Biofilm formation observed by TCP, TM, and CRA in other studies

Year	Study	Biofilm detection method		
		TCP (%)	TM (%)	CRA (%)
2022	Present study	56.92	38.46	41.53
2015	Mohamed and Shalakany ²⁵	45.6	38.11	36.9
2014	Sayal et al. ¹⁶	71.23	56.33	9.17
2012	Niveditha et al. ²³	-	44	56
2011	Hassan et al. ²⁶	63.63	54	11

Limitations of the study

Molecular methods of biofilm detection couldn't be used due to unavailability of resources.

CONCLUSION

Urinary catheterization is a common procedure done for therapeutic, diagnostic AND perioperative purposes in most hospitals. Indwelling urinary catheter acts as a nidus for biofilm formation among microorganisms. Biofilm provides survival advantages to the microorganism and thus give rise to persistent and recurrent UTT in catheterized patients. The duration of catheterization is inversely associated with UTI. Hence, need for catheter removal should be assessed daily to prevent infection. Periodic surveillance should be done to detect biofilm formation where prolonged catheterization is inevitable. Female gender and Diabetes are important risk factors associated with biofilm formation in CAUTI patients. Every health care facilities must follow a standard care bundle approach during the insertion and maintenance of urinary catheter for the prevention of CAUTI.

ACKNOWLEDGMENT

All patients who have participated in the present study and all the staffs of the department of microbiology who have cooperated in the study.

REFERENCES

- Korbel L, Howell M and Spencer JD. The clinical diagnosis and management of urinary tract infections in children and adolescents. *Paediatr Int Child Health*. 2017;37(4):273-279. <https://doi.org/10.1080/20469047.2017.1382046>
- Trautner BW. Management of catheter-associated urinary tract infection. *Curr Opin Infect Dis*. 2010;23(1):76-82. <https://doi.org/10.1097/QCO.0b013e328334dda8>
- Stickler DJ. The bacterial biofilms and the encrustation of the urethral catheters. *Biofouling*. 1996;9(4):293-305. <https://doi.org/10.1080/08927019609378311>
- Spoering AL and Lewis K. Biofilms and planktonic cells of *Pseudomonas aeruginosa* have similar resistance to killing by antimicrobials. *J Bacteriol*. 2001;183(23):6746-51. <https://doi.org/10.1128/JB.183.23.6746-6751.2001>
- Jamal M, Ahmad W, Andleeb S, Jalil F, Imran M, Nawaz MA, et al. Bacterial biofilm and associated infections. *J Chin Med Assoc*. 2018;81(1):7-11. <https://doi.org/10.1016/j.jcma.2017.07.012>
- Nandakumar V, Chittaranjan S, Kurian VM and Doble M. Characteristics of bacterial biofilm associated with implant material in clinical practice. *Polym J*. 2013;45(2):137. <https://doi.org/10.1038/pj.2012.130>
- Schroeder M, Brooks BD and Brooks AE. The complex relationship between virulence and antibiotic resistance. *Genes (Basel)*. 2017;8(1):39. <https://doi.org/10.3390/genes8010039>
- Forbes BA, Sahm DF and Weissfield AS. *Bailey and Scott's Diagnostic Microbiology*. 10th ed. St. Louis, Missouri, USA: Mosby Inc.;1998.
- Collee JG. *Mackie and McCartney Practical Medical Microbiology (English)*. 14th ed. London: Churchill Livingstone; 1996.
- Mehta R and Wyawahare AS. Evaluation of hichrom *candida* differential agar for species identification of *Candida* isolates from various clinical sample. *Int J Cont Med. Res*. 2016;3(4):1219-1222. <https://doi.org/10.20546/ijcmas.2021.1008.041>
- Christensen GD, Simpson WA, Younger JJ, Baddour LM, Barrett FF, Melton DM, et al. Adherence of coagulase-negative staphylococci to plastic tissue culture plates: A quantitative model for the adherence of staphylococci to medical devices. *J Clin Microbiol*. 1985;22(6):996-1006.

- <https://doi.org/10.1128/jcm.22.6.996-1006.1985>
12. Christensen GD, Simpson WA, Bisno AL and Beachey EH. Adherence of slime-producing strains of *Staphylococcus epidermidis* to smooth surfaces. *Infect Immun*. 1982;37(1):318-326.
<https://doi.org/10.1128/iai.37.1.318-326.1982>
 13. Freeman DJ, Falkiner FR and Keane CT. New method for detecting slime production by coagulase negative staphylococci. *J Clin Pathol*. 1989;42(8):872-874.
<https://doi.org/10.1136/jcp.42.8.872>
 14. Mariana NS, Salman SA, Neela V and Zamberi S. Evaluation of modified Congo Red Agar for detection of biofilm produced by clinical isolates of methicillin-resistance *Staphylococcus aureus*. *Afr J Microbiol Res*. 2009;3(6):330-338.
 15. MedCalc Software Ltd. Diagnostic Test Evaluation Calculator (Version 20.116). Available from: https://www.medcalc.org/calc/diagnostic_test.php [Last accessed on 2022 Oct 27].
 16. Sayal P, Singh K and Devi P. Detection of bacterial biofilm in patients with indwelling urinary catheters. *CIBTech J Microbiol*. 2014;3(3):9-16.
 17. Vinoth M, Prabagaravarathanan R and Bhaskar M. Prevalence of microorganisms causing catheter associated urinary tract infections (CAUTI) among catheterised patients admitted in a tertiary care hospital. *Int J Res Med Sci*. 2017;5(6):2367-2372.
<https://doi.org/10.18203/2320-6012.ijrms20172084>
 18. Karkee P, Dhital D, Madhup SK and Sherchan JB. Catheter associated urinary tract infection: Prevalence, microbiological profile and antibiogram at a Tertiary care hospital. *Ann Clin Chem Lab Med*. 2017;3(2):3-10.
<https://doi.org/10.3126/acclm.v3i2.19675>
 19. Kulkarni SG, Talib SH, Naik M and Kale A. Profile of urinary tract infection in indwelling catheterized patients. *IOSR J Dent Med Sci*. 2014;13(4):132-138.
<https://doi.org/10.9790/0853-1344132138>
 20. Jayasukhbbhai DM, Komal DP and Vegad MM. Study of incidence and risk factors of urinary tract infection in catheterised patients admitted at tertiary care hospital. *Int J Res Med Sci*. 2015;3(12):3808-3811.
<https://doi.org/10.18203/2320-6012.ijrms20151447>
 21. Almalki MA and Varghese R. Prevalence of catheter associated biofilm producing bacteria and their antibiotic sensitivity pattern. *J King Saud Univ Sci*. 2022;32(2):1427-1433.
<https://doi.org/10.1016/j.jksus.2019.11.037>
 22. Arina S and Shamsuzzaman SM. Antibiotic sensitivity patterns of uropathogens isolated from catheterized patients in a tertiary care hospital in Dhaka, Bangladesh. *Urol Nephrol Open Access J*. 2021;9(3):61-65.
<https://doi.org/10.15406/unoaj.2021.09.00309>
 23. Niveditha S, Pramodhini S, Umadevi S, Kumar S and Stephen S. The isolation and the biofilm formation of uropathogens in the patients with catheter associated urinary tract infection. *J Clin Diag Res*. 2012;6(9):1478-1483.
<https://doi.org/10.7860/JCDR/2012/4367.2537>
 24. Ghanwate NA, Thakare PV, Bhise PR and Tayde S. Prevention of biofilm formation in urinary catheters by treatment with antibiofilm agents. *Int J Sci Res (IJSR)*. 2014;3(4):714-717.
 25. Mohamed E and Shalakany HE. Detection of biofilm formation in uropathogenic bacteria. *Egypt J Med Microbiol*. 2015;24(1):49-57.
https://doi.org/10.4103/JLP.JLP_98_18
 26. Hassan A, Usman J, Kaleem F, Omair M, Khalid A and Iqbal M. Evaluation of different detection methods of biofilm formation in the clinical isolates. *Braz J Infect Dis*. 2015;15(4):305-311.
 27. Chandak RJ, Mishra B, Thakur A, Loomba PS and Dogra V. Comparison of methods of biofilm detection in urinary *Candida* isolates and evaluating its role in persistent candiduria. *Nat J Lab Med*. 2018;7(2):6-11.
 28. Abdallah NM, Elsayed SB, Yassin MM and El-gohary GM. Biofilm forming bacteria isolated from urinary tract infection, relation to catheterization and susceptibility to antibiotics. *Int J Biotechnol Mol Biol Res*. 2011;2(10):172-178.
 29. Subramanian P, Shanmugam N, Sivaraman U, Kumar S and Selvaraj S. Antibiotic resistance pattern of biofilm-forming uropathogens isolated from catheterised patients in Pondicherry, India. *Australas Med J*. 2012;5(7):344-348.
<https://doi.org/10.4066/AMJ.2012.1193>
 30. Sayal P, Sadhu R, Singh K and Devi P. Slime production among uropathogenic bacterial isolates: Evaluating different phenotypic detection methods. *Ann Pathol Lab Med*. 2017;4(1):49-53.
<https://doi.org/10.21276/apalm.2017.1064>
 31. Asati S and Chaudhary U. Comparison of tissue culture plate and modified tissue culture plate method for biofilm detection in members of family *Enterobacteriaceae*. *J Clin Diagn Res*. 2018;12(7):20-23.
<https://doi.org/10.7860/JCDR/2018/34795.11827>
 32. Sharma M, Aparna, Yadav S and Chaudhary U. Biofilm production in uropathogenic *Escherichia coli*. *Indian J Pathol Microbiol*. 2009;52(2):294.
<https://doi.org/10.4103/0377-4929.48960>
 33. Nicolle LE. The catheter-related urinary tract infections. *Drugs Aging*. 2005;22(8):627-639.
<https://doi.org/10.2165/00002512-200522080-00001>

Authors Contribution:

RP- Definition of intellectual content, literature survey, prepared first draft of manuscript, implementation of study protocol, data collection and data analysis, manuscript preparation; **PS**- Concept design, clinical protocol, data collection, statistical analysis and interpretation, manuscript preparation and submission of article, **KP**- Design of study, manuscript editing and revision, **AK**- Coordination and manuscript revision, **AS**- Review manuscript literature survey and preparation of figures; **JR**- Coordination and manuscript revision.

Work attributed to:

College of Medicine and JNM Hospital, Kalyani, Nadia, West Bengal, India.

Orcid ID:

Dr. Retina Paul - <https://orcid.org/0000-0002-2205-6596>
 Mr. Avi Kapoor - <https://orcid.org/0009-0006-3668-0513>
 Dr. Kuhu Pal - <https://orcid.org/0009-0001-9762-8560>
 Dr. Priyanka Saha - <https://orcid.org/0009-0005-3573-3508>
 Mrs. Arpita Sinha - <https://orcid.org/0009-0002-4047-748X>
 Mr. Joydip Roy - <https://orcid.org/0009-0007-8159-7118>

Source of Support: Nil, **Conflicts of Interest:** None declared.